

# Non-return valve

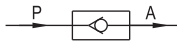


## NRV Series



NRV

### Symbol



### Product feature

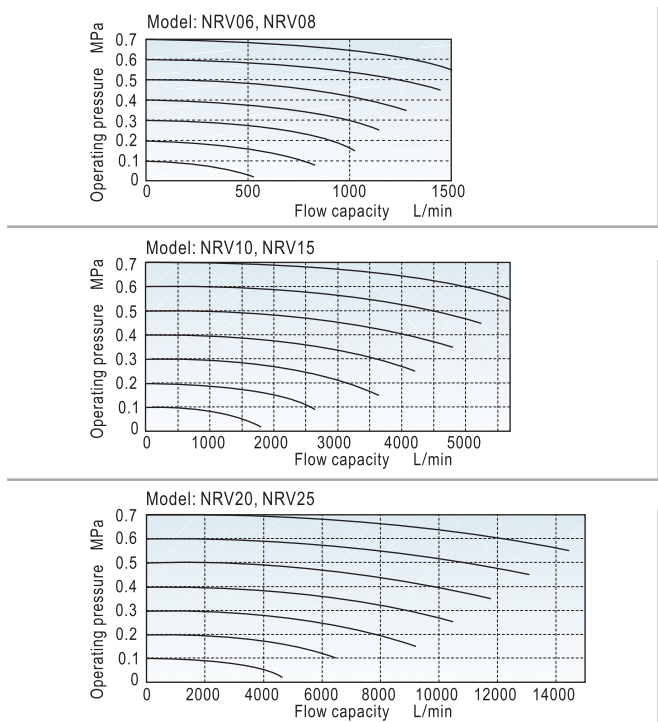
1. There are many port sizes: 1/8", 1/4", 3/8", 1/2", 3/4", 1".
2. It allows the fluid to flow in one direction **ONLY**.
3. It is prevent backflow due to sudden drop in pressure or decrease in air consumption .
4. There is large valid area of section.
5. The spool is made of POM, valve's core sealed with rubber, and it has a compact structure.

### Ordering code

**NRV 08 P**

<p>Model</p> <p>NRV: Non-return valve</p>	<p>Thread type</p> <p>P: PT T: NPT G: G</p>	<p>Port size</p> <p>06: 1/8" 08: 1/4" 10: 3/8" 15: 1/2" 20: 3/4" 25: 1"</p>
---	---	---

### Flow chart



### Specification

Model	NRV06	NRV08	NRV10	NRV15	NRV20	NRV25
Fluid	Air (to be filtered by 40 μm filter element)					
Port size①	1/8"	1/4"	3/8"	1/2"	3/4"	1"
Orifice size mm <sup>2</sup> (Cv valve)	18(1.0)	27(1.5)	60(3.33)	73(4.06)	230(12.78)	260(14.44)
Pressure range	0.02~1.0MPa(2.9~145psi)					
Proof pressure	1.5MPa(215psi)					
Temperature	-20~70°C					
Material body	Aluminum alloy					

Note ①: PT thread, NPT thread and G thread are available.

### Inner structure

NRV06, 08

NRV10, 15, 20, 25

No.	Item	Material
1	Body	Aluminum alloy
2	Spring	Stainless steel
3	Spool	POM
4	End cover	Aluminum alloy
5	Screw	Carbon steel
6	O-ring	NBR
7	Washer	SPCC
8	Gasket washer	NBR/Aluminum alloy+NBR
9	Bumper	NBR

### Dimension

Model\Item	A	B	C	D
NRV06	50	25	30	1/8"
NRV08	50	25	30	1/4"
NRV10	67	36.5	48	3/8"
NRV15	67	36.5	48	1/2"
NRV20	95	50	66	3/4"
NRV25	95	50	66	1"

