

Humphrey[®]

iDP Series

**IN CONTROL OF
YOUR DIFFICULT MEDIA**



Humphrey Products Company • www.humphrey-products.com
PO Box 2008, Kalamazoo, MI 49003 • P: 269.381.5500 F: 269.381.4113
iDP3-2018 Copyright © 2018 Humphrey Products Company, Inc. Printed in USA

Humphrey iDP INERT DIAPHRAGM-POPPET VALVES

Introducing **Humphrey iDP**, a series of inert media separation valves, specifically designed for aggressive liquids and gases.



Humphrey iDP 300 SERIES

Small 2- and 3-Port Type
Inline or Manifold Mount
Pin or Lead Wire
Coil Connection



Humphrey iDP 350/351 SERIES

2-Port Type
Barb or 8mm Porting
Spade or Lead Wire
Coil Connection



Humphrey iDP 370/371 SERIES

3-Port Type
Barb or 8mm Porting
Spade or Lead Wire
Coil Connection



Humphrey iDP 390/391 SERIES

2-Port Type
Barb or 8mm Porting
Spade or Lead Wire
Coil Connection

TYPICAL MARKETS AND APPLICATIONS

- Clinical Diagnostics
- Analytical Chemistry
- Agent Detection
- Environmental Monitoring
- Food and Beverage
- Gaseous Flow Control

ENGINEERED SOLUTION WITH MEDIA SEPARATION VALVES

- Custom Proportional diaphragm isolation valve (390 series) option
- Body rotation configurations
- Multiple "wetted" material choices
- Custom wire termination
- Valve integration into your custom system
- Value added designs integrating multiple valves and/or sensors



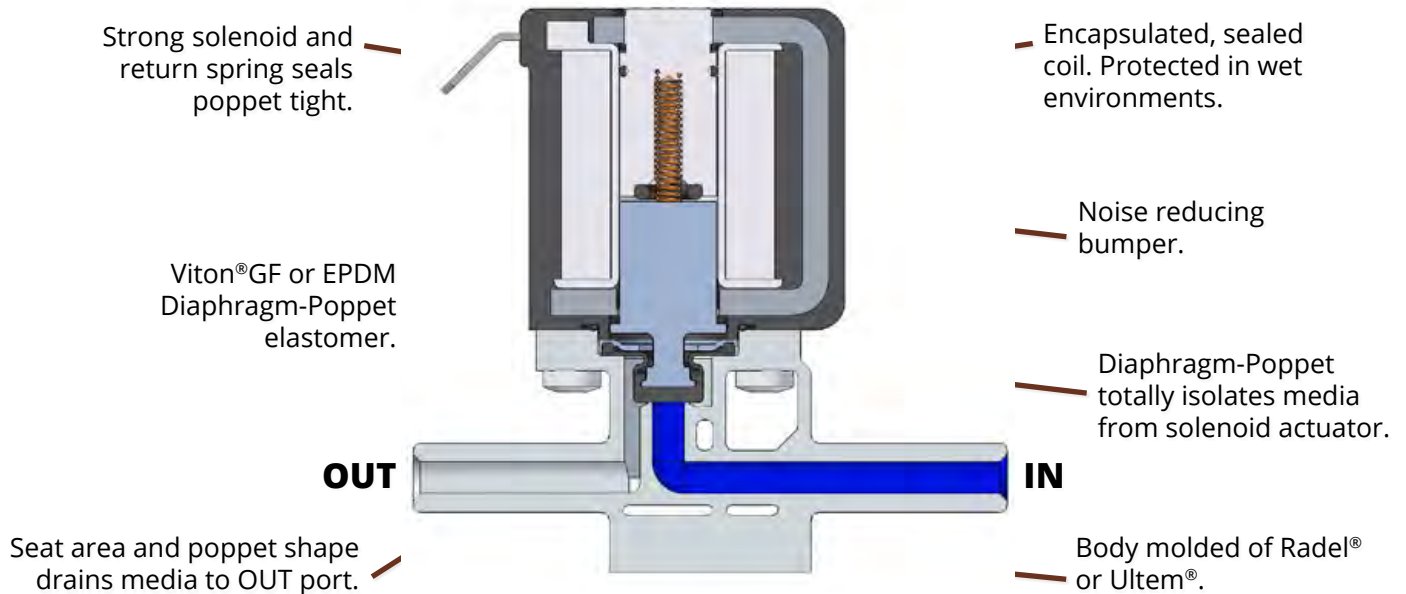
EXAMPLES OF COMPATIBLE MEDIA

| | |
|------------------------|-------------------|
| Blood and Bio-Fluids | Dialysate |
| Reagents and Solvents | Renaline® |
| Ultra Pure Water | Formaldehyde |
| Ethyl, Methyl Alcohols | Saline |
| Sodium Hypochlorite | Dextrose/Sugars |
| Lye (Sodium Hydroxide) | Hydrogen Peroxide |
| Ethylene Glycol | Citric Acid |
| Formaldehyde | Acetic Acid |
| Biological Solutions | Others |

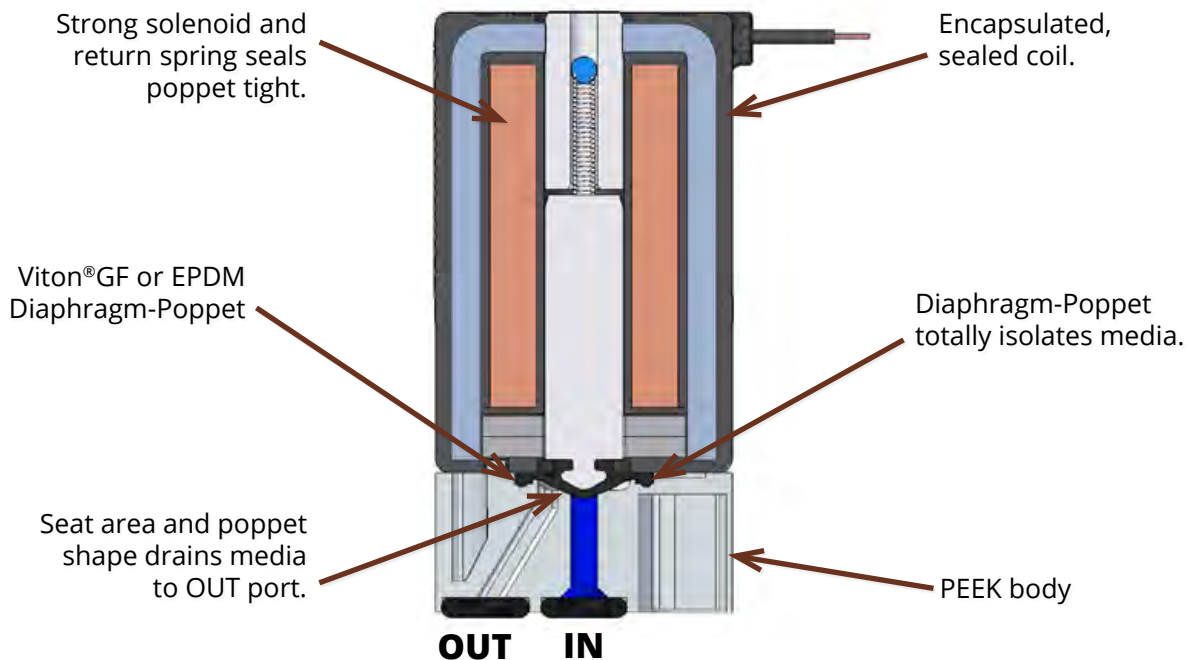


Humphrey iDP are efficient 2- and 3-port valves containing features ideal for aggressive media applications. Valves are constructed of materials suitable for bodily fluids, aggressive chemicals and cleaning fluids, and elevated fluid temperatures. The flexing diaphragm-poppet design isolates the solenoid from media penetration, while the inert body material ensures long life and sustained performance.

350 SERIES



300 SERIES



Humphrey iDP

300 SERIES

PRODUCT FEATURES

- Inert wetted materials provide broad chemical compatibility
Body/Fitting Elements – PEEK (Polyethylene glycol ketone)
Diaphragm-Poppet/Seals – Viton®-GF or EPDM
- Max pressure: 40 PSI [2.4 bar] standard
- Flow: Up to 1830 ml/min of water or similar fluid,
Up to 62 lpm of air or similar gas
- Integral diaphragm-poppet isolates flow path from solenoid
- Coil encapsulation protects from corrosive external fluid exposure
- Suitable for high fluid temperatures – up to 203°F (95°C)
- Various port types and manifold mounting provides design flexibility
- Robust design; Tested to beyond 20 million cycles



**2-Port
Inline**

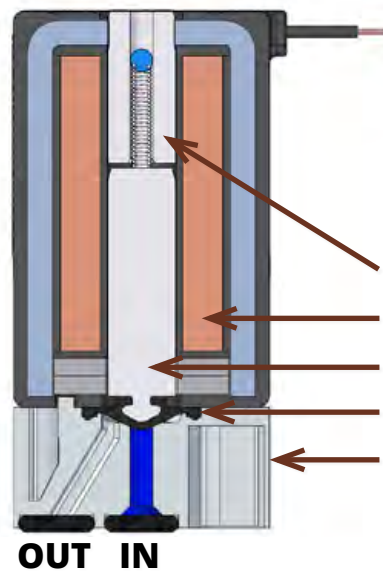
**3-Port
Inline**



**2-Port
Manifold**

TYPICAL FLUIDS

Blood and Bio-fluids
Reagents and Solvents
Ultra Pure Water
Sodium Hypochlorite
Lye (Sodium Hydroxide)
Ethylene Glycol
Formaldehyde
Ethyl, Methyl Alcohols



CONSTRUCTION

- Pole Piece
- Coil
- Armature
- Diaphragm-Poppet
- Body

OUT IN

HOW TO ORDER

Humphrey iDP 300 SERIES



**2-Port
Inline** **3-Port
Inline** **2-Port
Manifold**

300

7

1

1

3

0

Order Example:
30071130

DIAPHRAGM MATERIAL

7. Viton®GF*
8. EPDM

VALVE TYPE

1. 2-Port Inline, NC
3. 3-Port Inline
4. 2-Port Manifold Mt, NC

PORT TYPES

0. Manifold (No Barbs)
1. 1/16" Tube Barbs
2. 3/32" Tube Barbs
3. 1/8" Tube Barbs

SOLENOID

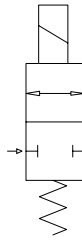
1. 12 VDC – Pin Connector**
3. 24 VDC – Pin Connector**
5. 12 VDC – Wire Leads
7. 24 VDC – Wire Leads

* Highly Fluorinated Viton®

** Tyco 640442-2; Molex 22-01-2027

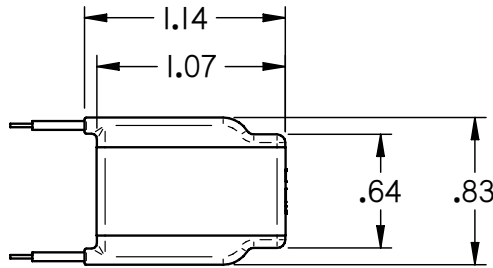
Humphrey iDP

2-PORT MANIFOLD

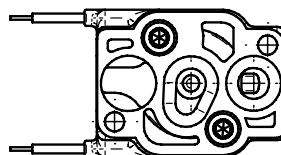
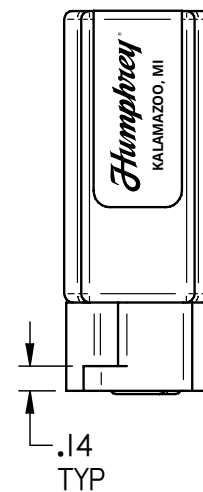
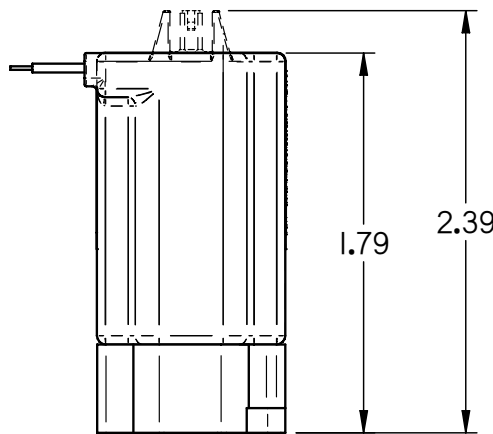
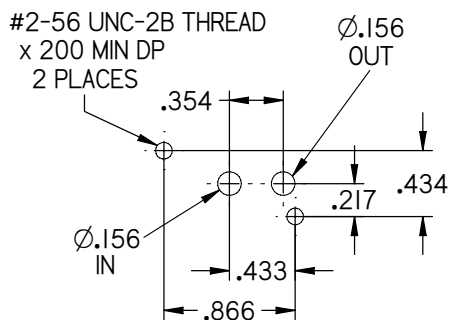


Humphrey 300 MANIFOLD SPECIFICATIONS

| | |
|---|---|
| Valve Function: | Normally Closed |
| Wetted Parts (Body and Diaphragm-Poppet): | PEEK, Viton®GF or EPDM |
| Number of Ports: | 2 |
| Number of Positions: | 2 |
| Type of Operation: | Direct Solenoid, Media Separated |
| Piping Type: | Manifold, Sub-base Piping |
| Media: | Aggressive Liquids (Gases) |
| Internal Volume: | Unactuated Under Poppet: 0.004in ³ Actuated: 0.012in ³ |
| Max Flow (Water) @ 40 PSI: | 1.83 LPM |
| Max Flow (Air) @ 40 PSI: | 62 LPM |
| Pressure Range: | Vacuum to 40 PSI |
| Fluid Temp Range: | -20°C to 95°C |
| Ambient Temp Range: | -20°C to 65°C |
| Max Cycles/Min: | 300 |
| Response Time: | 25msec @ 40 PSI |
| Electrical Entry: | Plug-In or Lead Wires |
| Available Voltages: | 12VDC, 24VDC |
| Voltage Tolerance: | ±10% |
| Power Consumption: | 3.5W |
| Weight: | 0.27 lbs |



FOOTPRINT



RECOMMENDED MOUNTING HARDWARE:

Screws: SHCS #2-56 x 5/16 with 5/64 Hex Head Screw Install
Tool: 5/64 Hex Head Ball End Screw Driver (McMaster-Carr 5497A24; Grainger 29RU75)

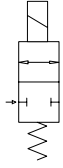
RECOMMENDED MATING ELECTRICAL CONNECTION:

Pins: Tyco 640442-2; Molex 22-01-2027
Lead Wire: Connect to 22 AWG x 24" length

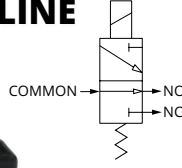
Humphrey iDP

Humphrey 300 2-,3-PORT INLINE SPECIFICATIONS

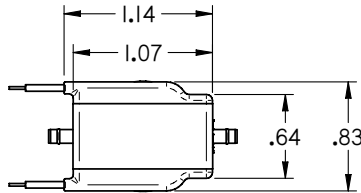
2-PORT INLINE



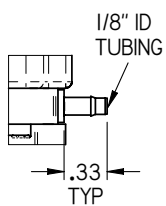
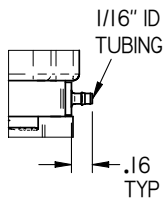
3-PORT INLINE



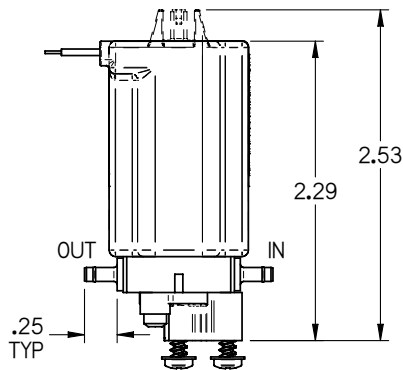
| | | |
|--|----------------------------------|---|
| Valve Function: | Normally Closed | |
| Wetted Parts (Body and Diaphragm-Poppet): | PEEK, Viton®GF or EPDM | |
| Number of Ports: | 2 | 3 |
| Number of Positions: | 2 | 2 |
| Type of Operation: | Direct Solenoid, Media Separated | |
| Piping Type: | Inline, Direct Piping | |
| Media: | Aggressive Liquids and Gases | |
| Max Flow (Water) @ 40 PSI: | 1.45 LPM | |
| Max Flow (Air) @ 40 PSI: | 50 LPM | |
| Pressure Range (Common 2-, 3-Port): | Vacuum to 40 PSI | |
| Reverse Pressure Range, 3-Port (NO or NC): | Vacuum to 10 PSI | |
| Fluid Temp Range: | -20°C to 95°C | |
| Ambient Temp Range: | -20°C to 65°C | |
| Maximum Cycles/Min: | 300 | |
| Response Time: | 25msec @ 40 PSI | |
| Port Size (Barbs, Tubing ID): | 1/16", 3/32" or 1/8" | |
| Electrical Entry: | Plug-In or Lead Wires | |
| Available Voltages: | 12VDC, 24VDC | |
| Voltage Tolerance: | ±10% | |
| Power Consumption: | 3.5W | |
| Weight: | 0.22 lbs | |



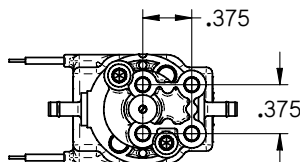
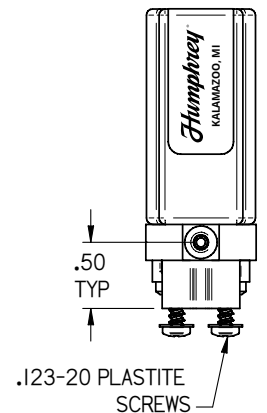
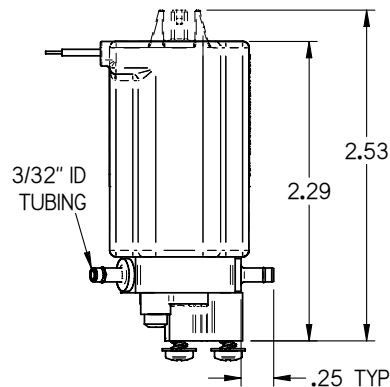
| Internal Volumes | 1/16" Barb Body | 3/32" Barb Body | 1/8" Barb Body |
|--------------------------------|----------------------|----------------------|----------------------|
| 2-Way Unactuated Under Poppet | 0.007in ³ | 0.007in ³ | 0.009in ³ |
| 2-Way Actuated | 0.013in ³ | 0.014in ³ | 0.017in ³ |
| 3-Way Unactuated (Common & NO) | 0.010in ³ | 0.012in ³ | 0.014in ³ |
| 3-Way Unactuated (Common & NC) | 0.009in ³ | 0.010in ³ | 0.022in ³ |



2-PORT



3-PORT



RECOMMENDED MATING ELECTRICAL CONNECTION:
 Pins: Tyco 640442-2; Molex 22-01-2027
 Lead Wire: Connect to 22 AWG x 24" length

Humphrey iDP

350 SERIES

PRODUCT FEATURES

- Inert wetted materials provide broad chemical compatibility
- Max pressure: 40 PSI (2.76 bar) standard
- Flow rates @ 40 PSI: 0 – 220 slpm air or 0 – 5.3 lpm water
- Integral diaphragm-poppet isolates flow path from solenoid
- Continuous-duty encapsulated coil for operation in wet environments
- Suitable for high fluid temperatures – up to 203°F (95°C)
- Robust design; Long service life
- Factory testing ensures reliability and repeatability
- Porting and mounting options offer design flexibility
- Manifold version available (see iDP 351)



350
2-Port Inline



351
2-Port Manifold

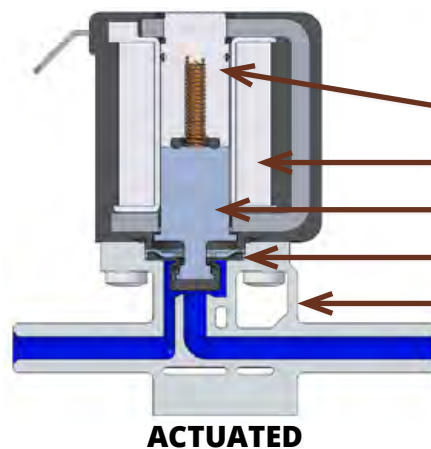
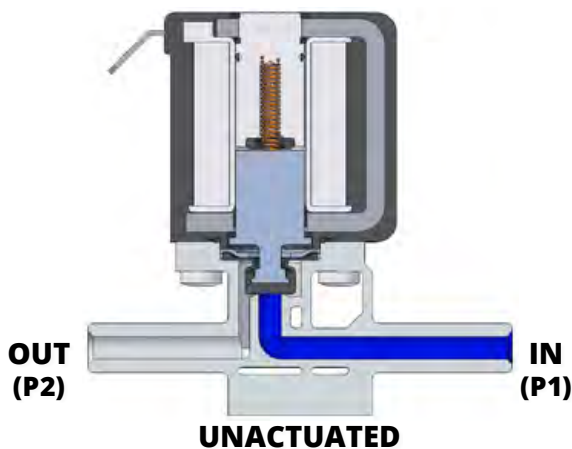
TYPICAL FLUIDS*

Biological Solutions
Dialysate
Renaline®
Formaldehyde

Saline
Dextrose/Sugars
Hydrogen Peroxide
Citric Acid

Acetic Acid
Sodium Hypochlorite

*Consult factory for assistance.



MAJOR PARTS

- ← Pole Piece
- ← Coil
- ← Armature
- ← Diaphragm-Poppet
- ← Body

HOW TO ORDER

Humphrey iDP 350 SERIES



350
2-Port Inline

351
2-Port Manifold

350

BASE MODEL
350 - Inline
351 - Manifold

2

MATERIAL (BODY-SEALS)

1. Ultem®-EPDM
2. Ultem®-Viton®GF
3. Radel®-EPDM*
4. Radel®-Viton®GF*

* Manifold Options

1

BODY STYLE (IN-OUT)

0. Manifold (No Barbs)
1. Barb-Barb
5. 8mm-8mm (5/16") (Quick Disconnect)

5

00

COIL TYPE & ORIENTATION (IN RELATION TO OUT/P2 PORT)

1. 1/4" Spade Terminal/Standard*
3. 1/4" Spade Terminal/Rotate 180°
5. Lead Wire/Standard*
7. Lead Wire/Rotate 180°

Order Example:
35021500

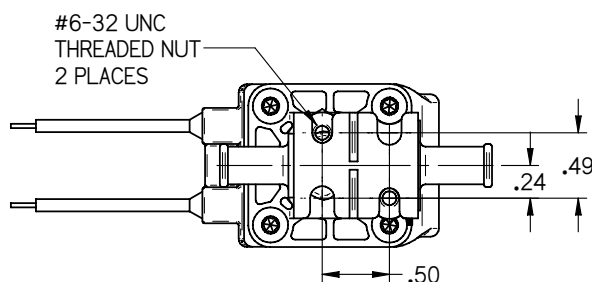
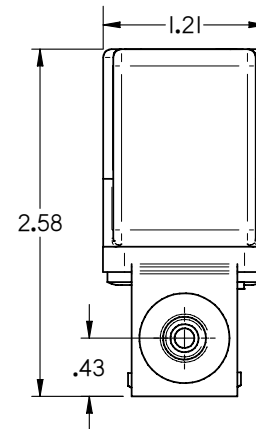
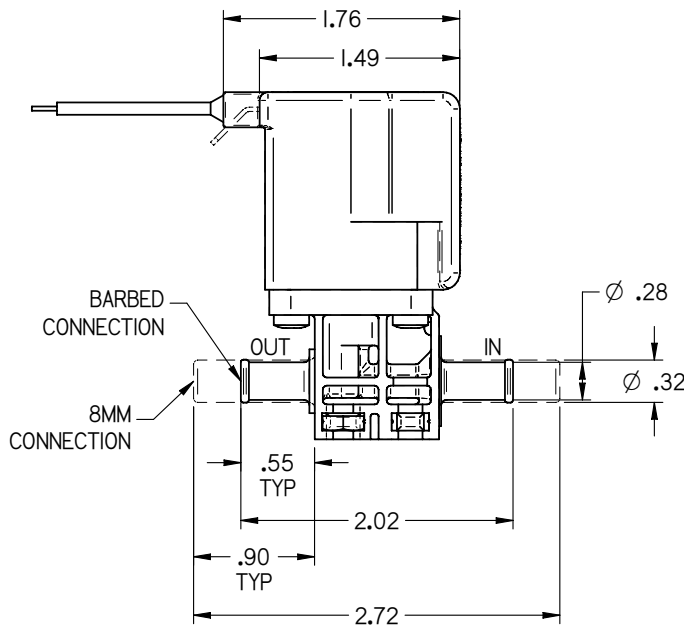
Humphrey iDP

2-PORT INLINE

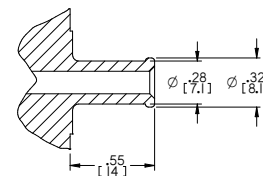


Humphrey 350 SERIES SPECIFICATIONS

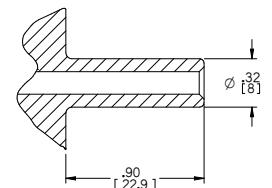
| | |
|---|---|
| Valve Function: | Normally Closed |
| Wetted Parts (Body & Diaphragm-Poppet): | Radel® or Ultem® and Viton®GF or EPDM |
| Number of Ports: | 2 |
| Number of Positions: | 2 |
| Type of Operation: | Direct Solenoid, Media Separated |
| Piping Type: | Inline, Direct Piping |
| Media: | Aggressive Liquids (Gases) |
| Internal Volume (Barb Body): | Unactuated Under Poppet: 0.026in ³ Actuated: 0.062in ³ |
| Max Flow (Water) @ 40 PSI: | 5.3 LPM |
| Max Flow (Air) @ 40 PSI: | 220 LPM |
| Pressure Range: | Vacuum to 40 PSI |
| Fluid Temp Range: | -20°C to 95°C |
| Ambient Temp Range: | -20°C to 65°C |
| Max Cycles/Min: | 300 |
| Response Time: | 16msec @ 40 PSI |
| Port Size: | 5/16" Barb; 8mm Quick Disconnection |
| Electrical Entry: | Spade Terminals or Lead Wires |
| Voltage: | 24VDC |
| Voltage Tolerance: | ±10% |
| Power Consumption: | 8.3W |
| Weight: | 0.38 lbs |



BODY STYLE OPTIONS



5/16" Barb

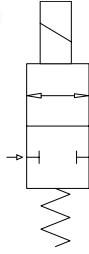


8mm Quick Disconnection

RECOMMENDED MATING ELECTRICAL CONNECTION:
Spade Size: 1/4 inch Terminal
Lead Wires: Connect to 20 AWG x 45" length

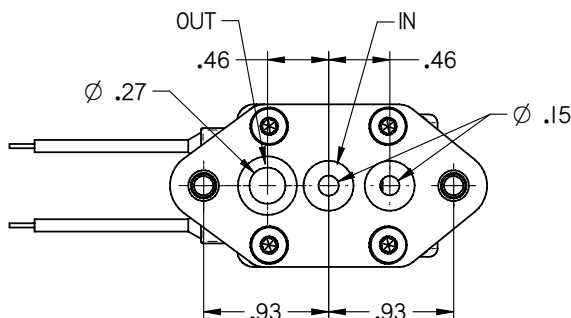
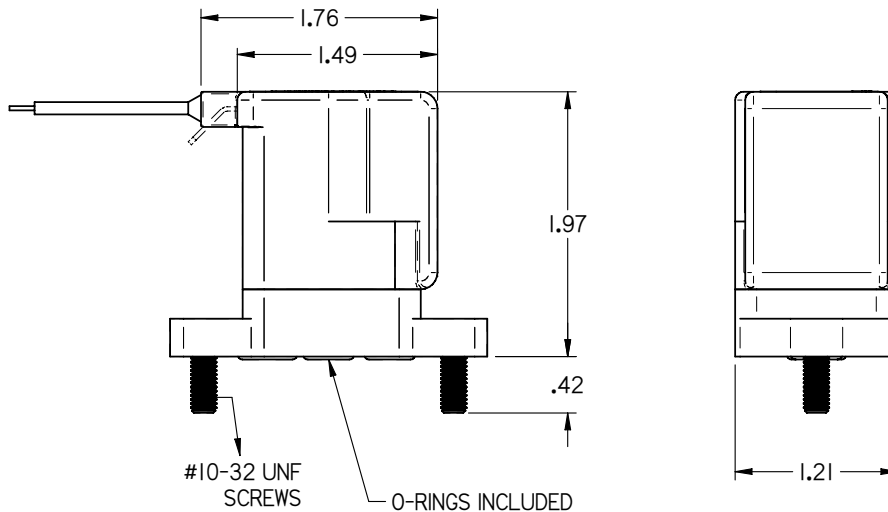
Humphrey iDP

2-PORT MANIFOLD



Humphrey 351 SERIES SPECIFICATIONS

| | |
|---|---|
| Valve Function: | Normally Closed |
| Wetted Parts (Body & Diaphragm-Poppet): | Radel® and Viton®GF or EPDM |
| Number of Ports: | 2 |
| Number of Positions: | 2 |
| Type of Operation: | Direct Solenoid, Media Separated |
| Piping Type: | Manifold Mount |
| Media: | Aggressive Liquids (Gases) |
| Internal Volume: | Unactuated Under Poppet: 0.004in ³ Actuated: 0.037in ³ |
| Max Flow (Water) @ 40 PSI: | 5.3 LPM |
| Max Flow (Air) @ 40 PSI: | 220 LPM |
| Pressure Range: | Vacuum to 40 PSI |
| Fluid Temp Range: | -20°C to 95°C |
| Ambient Temp Range: | -20°C to 65°C |
| Max Cycles/Min: | 300 |
| Response Time: | 16msec @ 40 PSI |
| Electrical Entry: | Spade Terminals or Lead Wires |
| Voltage: | 24VDC |
| Voltage Tolerance: | ±10% |
| Power Consumption: | 8.3W |
| Weight: | 0.39 lbs |



RECOMMENDED MATING ELECTRICAL CONNECTION:
Spade Size: 1/4 inch Terminal
Lead Wires: Connect to 20 AWG x 45" length

Humphrey iDP

370 SERIES

PRODUCT FEATURES

- Inert wetted materials provide broad chemical compatibility
- Max pressure: 40 PSI (2.76 bar) standard
- Flow rates @ 40 PSI: 0 – 220 slpm air or 0 – 5.3 lpm water
- Integral diaphragm-poppet isolates flow path from solenoid
- Continuous-duty encapsulated coil for operation in wet environments
- Suitable for high fluid temperatures – up to 203°F (95°C)
- Robust design; Long service life
- Factory testing ensures reliability and repeatability
- Porting and mounting options offer design flexibility
- Manifold version available (see iDP 371)



371
3-Port
Manifold



370
3-Port
Inline

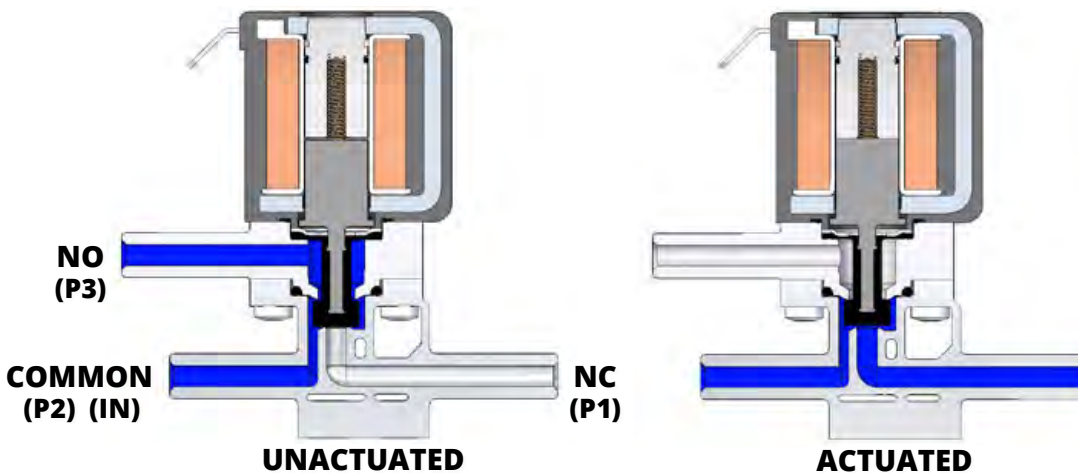
TYPICAL FLUIDS

Biological Solutions
Dialysate
Renaline®
Formaldehyde

Saline
Dextrose/Sugars
Hydrogen Peroxide
Citric Acid

Acetic Acid
Sodium Hypochlorite

**Consult factory for assistance.*



MAJOR PARTS

- Pole Piece
- Coil
- Armature
- Diaphragm-Poppet
- Body

HOW TO ORDER

Humphrey iDP 370 SERIES



370

BASE MODEL
370 - Inline
371 - Manifold

2

MATERIAL (BODY-SEALS)
1. Ultem®-EPDM
2. Ultem®-Viton®GF
3. Radel®-EPDM*
4. Radel®-Viton®GF*

1

BODY STYLE (IN-OUT)
0. Manifold (No Barbs)
1. Barb-Barb
5. 8mm-8mm (5/16")
(Quick Disconnect)

5

1

COIL TYPE & ORIENTATION (IN RELATION TO OUT/P2 PORT)
1. 1/4" Spade Terminal/Standard*
3. 1/4" Spade Terminal/Rotate 180°
5. Lead Wire/Standard*
7. Lead Wire/Rotate 180°

0

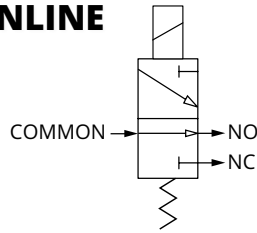
Order Example:
37021510

N.O. PORT
0. Manifold *
1. Inline
3. Rotate 180°

** Manifold Options*

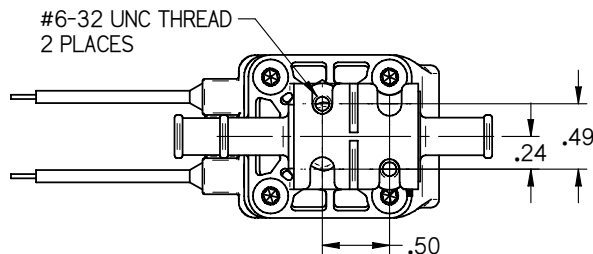
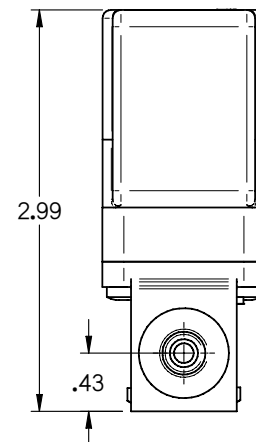
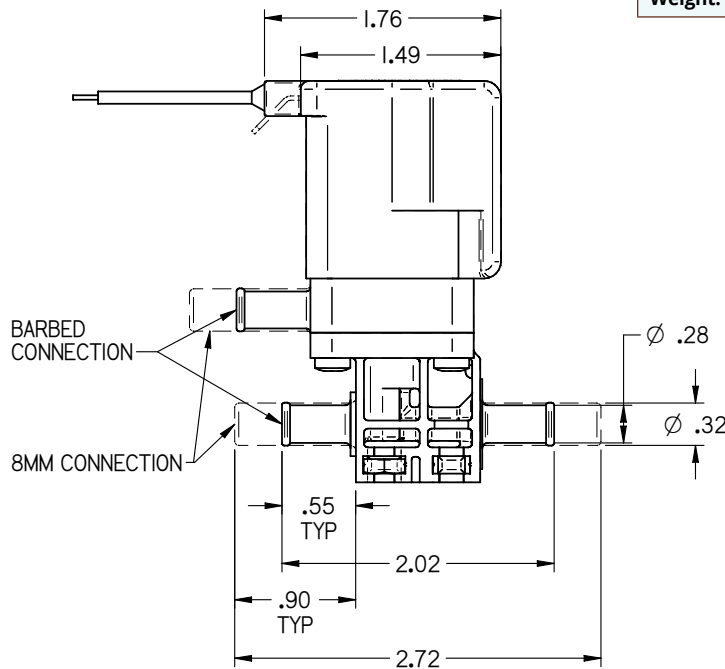
Humphrey iDP

3-PORT INLINE

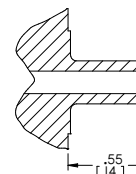


Humphrey 370 SERIES SPECIFICATIONS

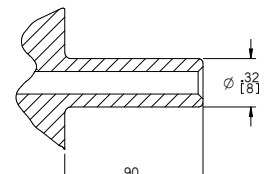
| | |
|---|--|
| Valve Function: | Normally Closed |
| Wetted Parts (Body & Diaphragm-Poppet): | Radel® or Ultem® and Viton®GF or EPDM |
| Number of Ports: | 3 |
| Number of Positions: | 2 |
| Type of Operation: | Direct Solenoid, Media Separated |
| Piping Type: | Inline, Direct Piping |
| Media: | Aggressive Liquids (Gases) |
| Internal Volume (Barb Body): | Unactuated (Common & NO): 0.086in ³ Actuated (Common & NC): 0.062in ³ |
| Max Flow (Water) @ 40 PSI: | 5.3 LPM |
| Max Flow (Air) @ 40 PSI: | 220 LPM |
| Pressure Range (common): | Vacuum to 40 PSI |
| Reverse Pressure Range (NO or NC): | Vacuum to 20 PSI |
| Fluid Temp Range: | -20°C to 95°C |
| Ambient Temp Range: | -20°C to 65°C |
| Max Cycles/Min: | 300 |
| Response Time: | 20msec @ 40 PSI |
| Port Size: | 5/16" Barb; 8mm Quick Disconnection |
| Electrical Entry: | Spade Terminals or Lead Wires |
| Voltage: | 24VDC |
| Voltage Tolerance: | ±10% |
| Power Consumption: | 8.3W |
| Weight: | 0.40 lbs |



BODY STYLE OPTIONS



5/16" Barb



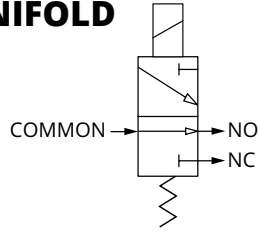
8mm Quick Disconnection

RECOMMENDED MATING ELECTRICAL CONNECTION:

Spade Size: 1/4 inch Terminal
Lead Wires: Connect to 20 AWG x 45" length

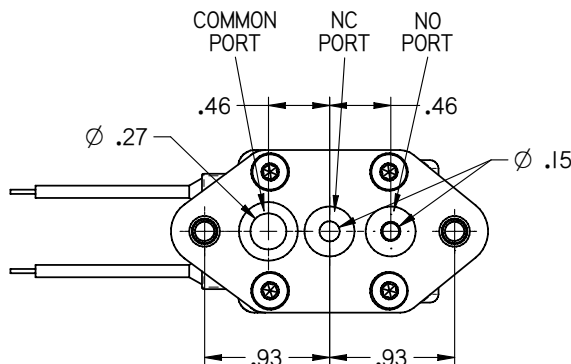
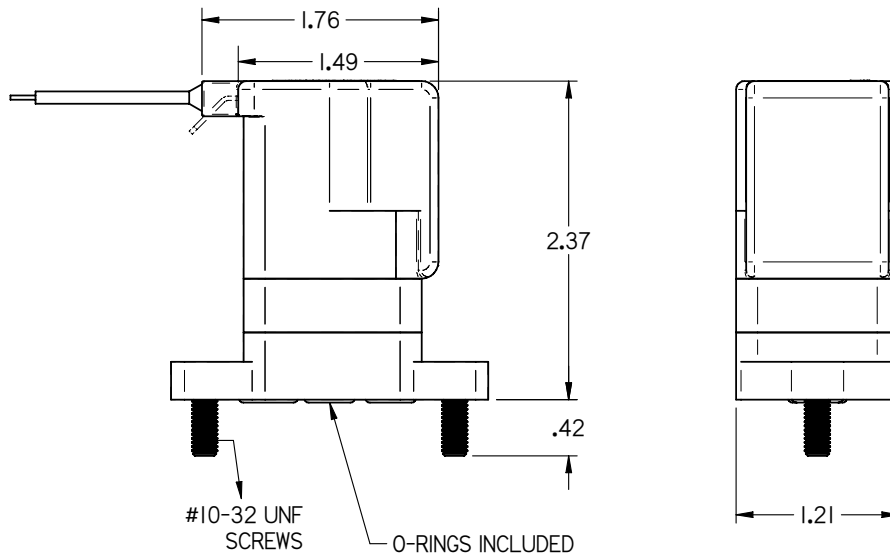
Humphrey iDP

3-PORT MANIFOLD



Humphrey 371 SERIES SPECIFICATIONS

| | |
|---|--|
| Valve Function: | Normally Closed |
| Wetted Parts (Body & Diaphragm-Poppet): | Radel® and Viton®GF or EPDM |
| Number of Ports: | 3 |
| Number of Positions: | 2 |
| Type of Operation: | Direct Solenoid, Media Separated |
| Piping Type: | Inline, Direct Piping |
| Media: | Aggressive Liquids (Gases) |
| Internal Volume: | Unactuated (Common & NO): 0.077in ³ Actuated (Common & NC): 0.035in ³ |
| Max Flow (Water) @ 40 PSI: | 5.3 LPM |
| Max Flow (Air) @ 40 PSI: | 220 LPM |
| Pressure Range (common): | Vacuum to 40 PSI |
| Reverse Pressure Range (NO or NC): | Vacuum to 20 PSI |
| Fluid Temp Range: | -20°C to 95°C |
| Ambient Temp Range: | -20°C to 65°C |
| Max Cycles/Min: | 300 |
| Response Time: | 20msec @ 40 PSI |
| Electrical Entry: | Spade Terminals or Lead Wires |
| Voltage: | 24VDC |
| Voltage Tolerance: | ±10% |
| Power Consumption: | 8.3W |
| Weight: | 0.42 lbs |



RECOMMENDED MATING ELECTRICAL CONNECTION:

Spade Size: 1/4 inch Terminal
Lead Wires: Connect to 20 AWG x 45" length

Humphrey iDP

390 SERIES

Proportional Diaphragm Isolation Valve

PRODUCT FEATURES

- Flow increase proportional to current increase
- Inert wetted materials provide broad chemical compatibility
- Max pressure: 40 PSI (2.76 bar) standard – Consult factory for higher pressure applications
- Flow rates: 0 – 80 SLPM air or 0 – 1.5 LPM water
- Integral diaphragm-poppet isolates flow path from solenoid
- Encapsulated coil for operation in wet environments
- Suitable for high fluid temperatures – up to 203°F (95°C)
- Individual testing insures reliability and repeatability
- Porting and mounting design flexibility



390
2-Port
Inline



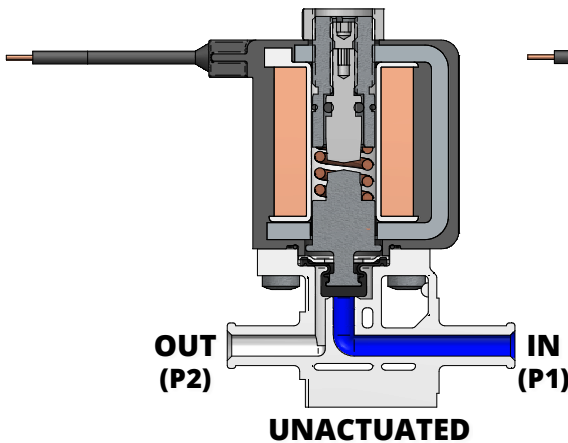
391
2-Port
Manifold

TYPICAL FLUIDS*

Biological solutions
Dialysate
Renaline®
Formaldehyde

Saline
Dextrose/Sugars
Hydrogen Peroxide
Citric Acid

Acetic Acid
Sodium Hypochlorite
**Consult factory for assistance.*



MAJOR PARTS

- Pole Piece
- Coil
- Armature
- Diaphragm-Poppet
- Body

HOW TO ORDER

Humphrey iDP 390 SERIES



390
2-Port Inline



391
2-Port Manifold

390

BASE MODEL
390 - Inline
391 - Manifold

2

MATERIAL (BODY-SEALS)
1. Ultem®-EPDM
2. Ultem®-Viton®GF
3. Radel®-EPDM*
4. Radel®-Viton®GF*

1

BODY STYLE (IN-OUT)
0. Manifold (No Barbs)
1. Barb-Barb
5. 8mm-8mm (5/16")
(Quick Disconnect)

5

COIL TYPE & ORIENTATION (IN RELATION TO OUT/P2 PORT)

- 1/4" Spade Terminal/Standard*
- 1/4" Spade Terminal/Rotate 180°
- Lead Wire/Standard*
- Lead Wire/Rotate 180°

10

Order Example:
39021510

PRESSURE SETTING
10. 10 PSI
20. 20 PSI
40. 40 PSI

* Manifold Options

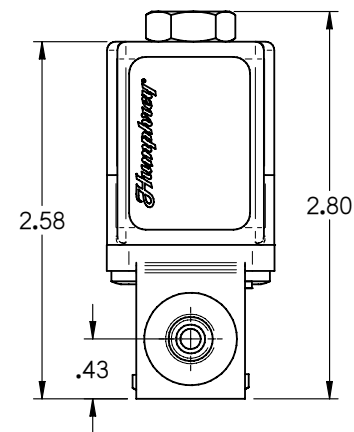
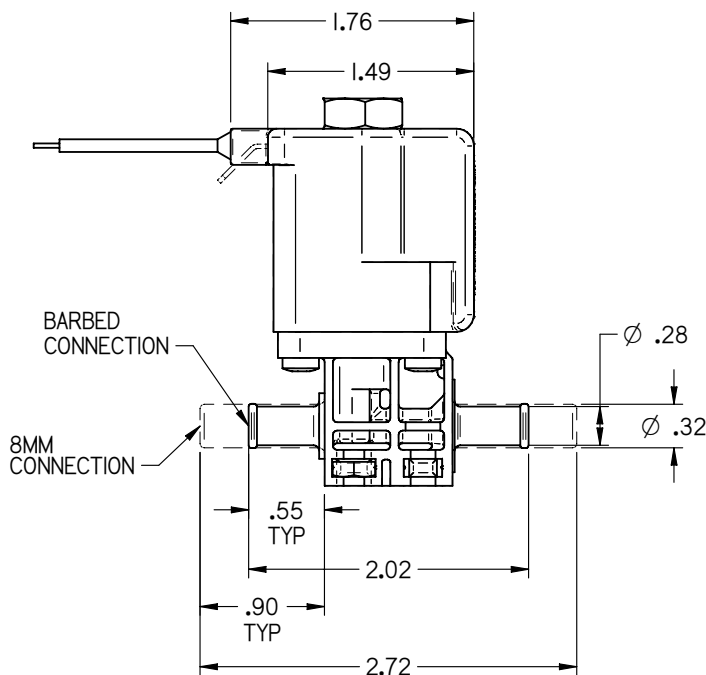
Humphrey iDP

2-PORT INLINE

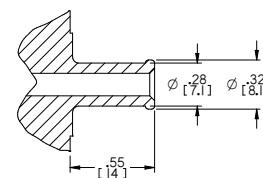


Humphrey 390 SERIES SPECIFICATIONS

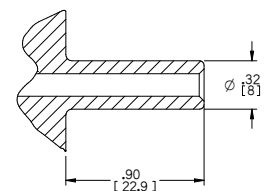
| | |
|--|---|
| Valve Function: | Normally Closed |
| Wetted Parts (Body & Diaphragm-Poppet): | Ultem® or Radel® and Viton®GF or EPDM |
| Number of Ports: | 2 |
| Type of Operation: | Direct Solenoid, Media Separated |
| Piping Type: | Inline, Direct Piping |
| Media: | Aggressive Liquids (Gasses) |
| Internal Volume (Barb Body): | Unactuated Under Poppet: 0.026in ³ Actuated: 0.062in ³ |
| Internal Volume (8mm Male Body): | Unactuated Under Poppet: 0.026in ³ Actuated: 0.074in ³ |
| Max Flow (Water) @ 40 PSI: | 1.5 LPM |
| Max Flow (Air) @ 40 PSI: | 80 LPM |
| Pressure Range: | Vacuum to 40 PSI |
| Fluid Temp Range: | -20°C to 95°C |
| Ambient Temp Range: | -20°C to 65°C |
| Port Size: | 5/16" Barb; 8mm Quick Disconnection |
| Electrical Entry: | Spade Terminals or Lead Wires |
| Voltage: | 24VDC |
| Operating Current Range: | 0-250 mA |
| Voltage Tolerance: | ±10% |
| Power Consumption: | 8.3W |
| Weight: | 0.42 lbs |



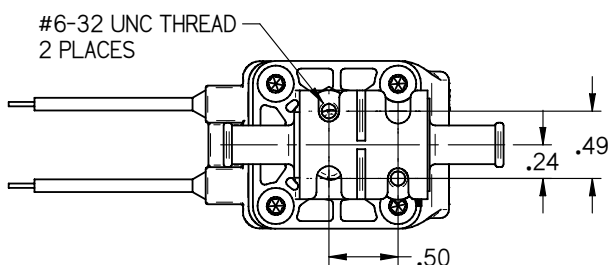
BODY STYLE OPTIONS



5/16" Barb



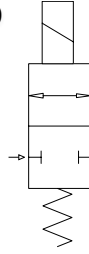
8mm Quick Disconnection



RECOMMENDED MATING ELECTRICAL CONNECTION:
Spade Size: 1/4 inch Terminal
Lead Wires: Connect to 20 AWG x 45" length

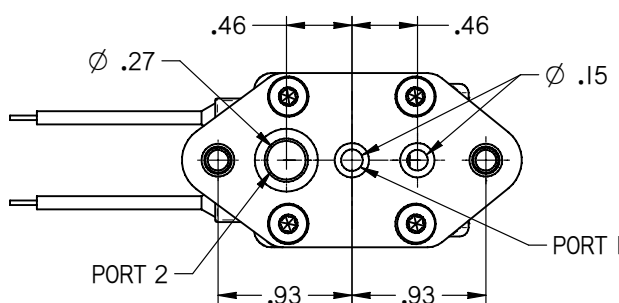
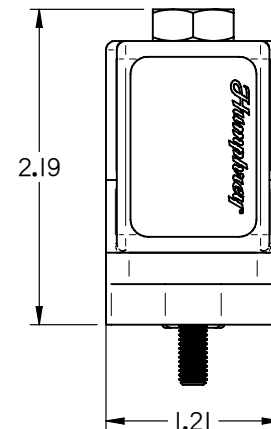
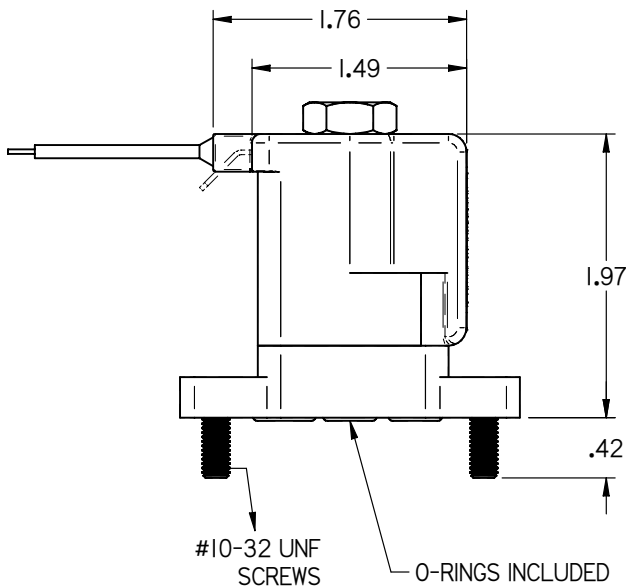
Humphrey iDP

2-PORT MANIFOLD



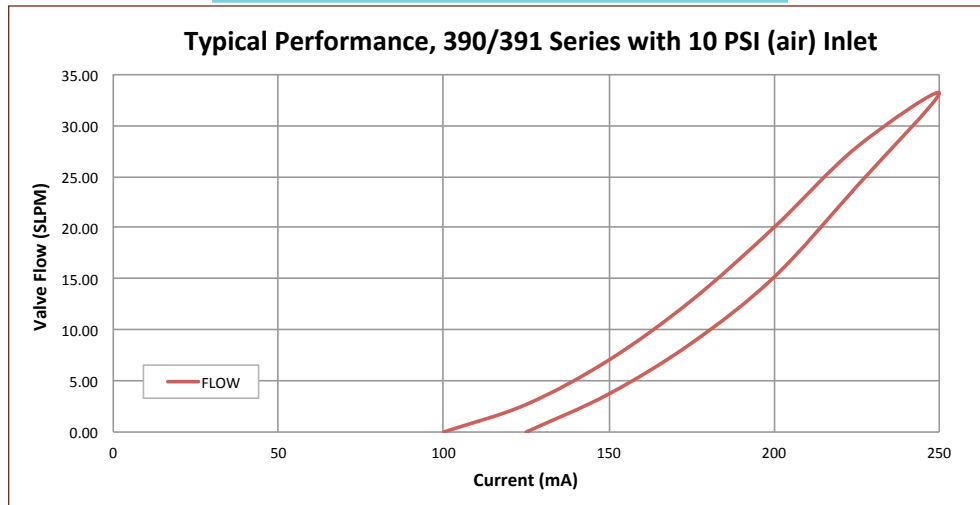
Humphrey 391 SERIES SPECIFICATIONS

| | |
|--|---------------------------------------|
| Valve Function: | Normally Closed |
| Wetted Parts (Body & Diaphragm-Poppet): | Ultem® or Radel® and Viton®GF or EPDM |
| Number of Positions: | 2 |
| Type of Operation: | Direct Solenoid, Media Separated |
| Piping Type: | Manifold |
| Media: | Aggressive Liquids (Gasses) |
| Max Flow (Water) @ 40 PSI: | 1.5 LPM |
| Max Flow (Air) @ 40 PSI: | 80 LPM |
| Pressure Range: | Vacuum to 40 PSI |
| Fluid Temp Range: | -20°C to 95°C |
| Ambient Temp Range: | -20°C to 65°C |
| Electrical Entry: | Spade Terminals or Lead Wires |
| Voltage: | 24VDC |
| Operating Current Range: | 0-250 mA |
| Voltage Tolerance: | ±10% |
| Power Consumption: | 8.3W |
| Weight: | 0.42 lbs |

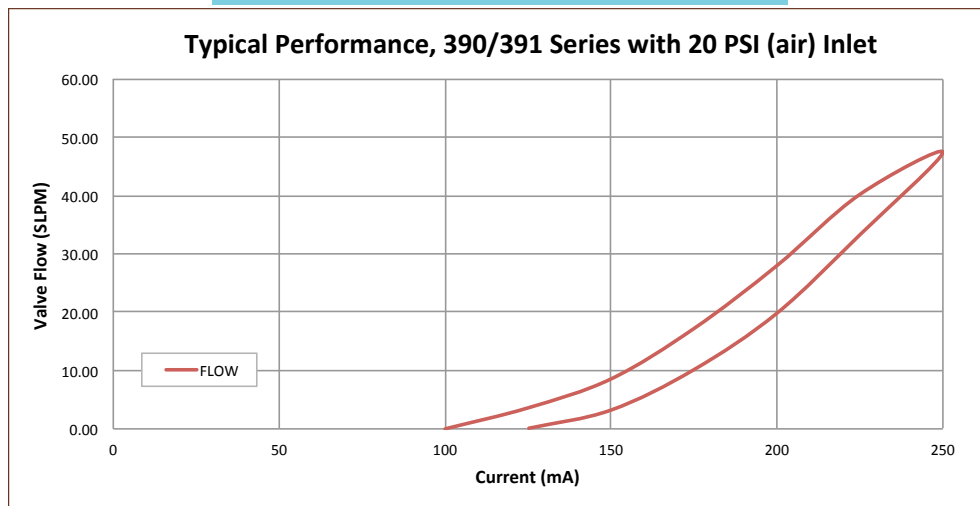


RECOMMENDED MATING ELECTRICAL CONNECTION:
Spade Size: 1/4 inch Terminal
Lead Wires: Connect to 20 AWG x 45" length

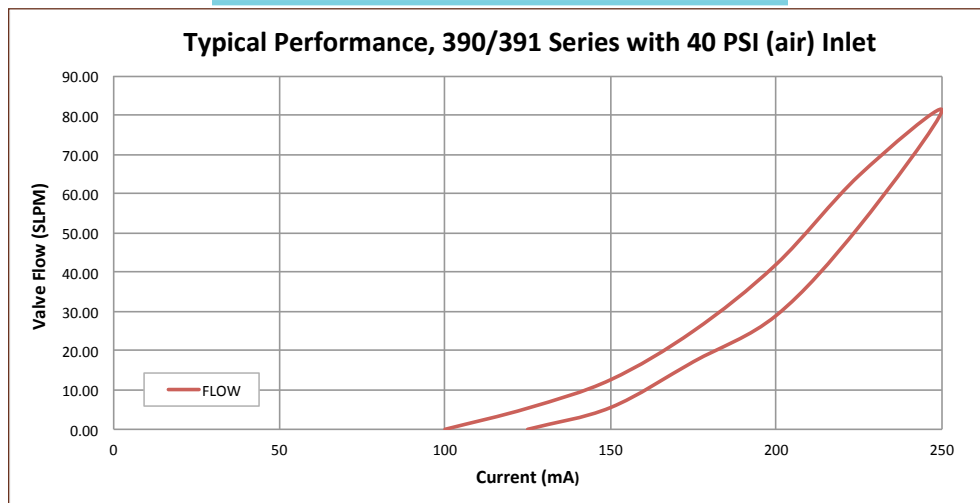
10 PSI SET



20 PSI SET



40 PSI SET



390/391 series valves are 100% factory calibrated and tested utilizing pneumatic DAQ driven system. This process insures a more stringent evaluation and precision calibration utilizing higher fidelity pneumatic instrumentation.