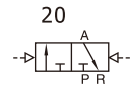
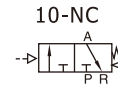
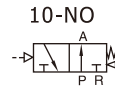


## 3A100 Series



### Ordering code

**3A 1 10 06 NO T**



① Model	② Code	③ Valve type	④ Port size	⑤ Acting type	⑥ Thread type
3A: Air valve(3/2 way)	1: 100 Series	10: Single air control 20: Double air control	M5: M5 06: 1/8"	NC: Normally closed NO: Normally opened	T: NPT

Please refer to P112 for manifold specification and the order way.

### Specification

Model	3A110-M5	3A120-M5	3A110-06	3A120-06
Fluid	Air(to be filtered by 40μm filter element)			
Acting	Exterior control			
Port size [Note1]	M5		1/8"	
Orifice size [Note4]	3A110-06,3A120-06:10.2mm <sup>2</sup> (Cv=0.6)			
Valve type	3 port 2 position			
Lubrication [Note2]	Not required			
Operating pressure	21~114psi(0.15~0.8MPa)			
Proof pressure	175psi(1.2MPa)			
Temperature	-20~70°C			
Material of body	Aluminum alloy			
Max. frequency [Note3]	5 cycle/sec			

[Note 1] NPT thread is available.

[Note 2] Once lubricated air is used, continue with same medium to optimise valve life span. Lubricants like ISO VG32 or equivalent are recommended.

[Note3] The maximum actuation frequency is in the no-load state.

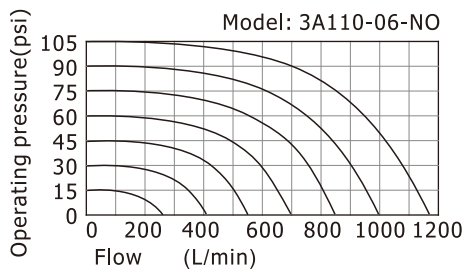
[Note4] Equivalent orifice S and Cv are all calculated from the flow rate data.

### Product feature

1. Structure in sliding column mode: good tightness and sensitive reaction.
2. Double air control valves have memory function.
3. Internal hole adopts special processing technology which has little attrition friction, low start pressure and long service life.
4. No need to add oil for lubrication.
5. Multi-mounting helps to install and apply.
6. Integrate with the manifold to save installation space.

## 3A100 Series

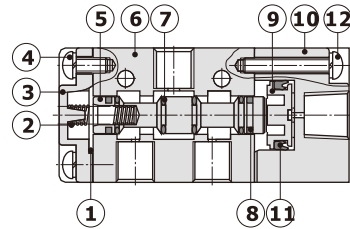
### Flow chart



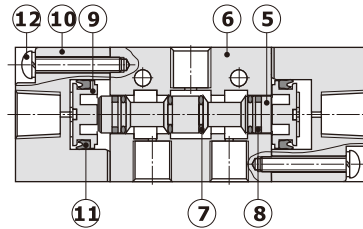
The data in flow rate chart are obtained from AirTAC lab.

### Inner structure

#### 3A110



#### 3A120

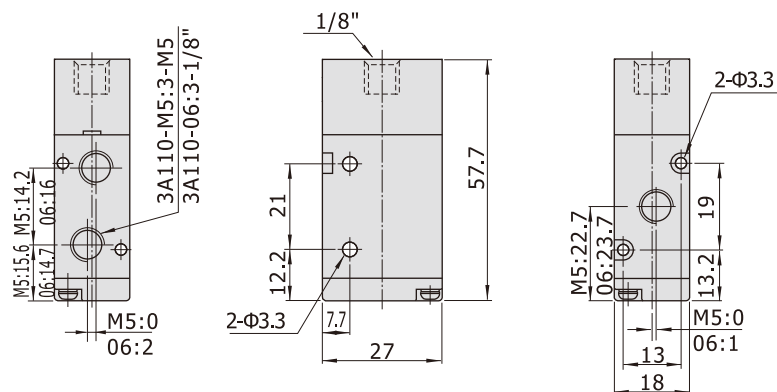


No.	Item	No.	Item	No.	Item
1	Bottom cover gasket	5	Spool	9	Piston
2	Spring	6	Body	10	Pilot body
3	Bottom cover	7	O-ring	11	Piston O-ring
4	Bottom cover screw	8	Wear ring	12	Screw

### Dimensions

#### 3A110

[Unit: mm]



#### 3A120

