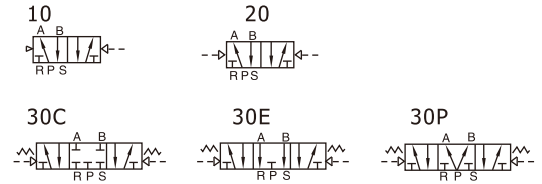


Air valve(5/2 way,5/3 way)

6A Series



Ordering code

6A 2 10 08 T

① ② ③ ④ ⑤

① Model	6A : Air valve (5/2, 5/3 way)					
② Code	05 : 0500 Series	1 : 100 Series		2 : 200 Series		3 : 300 Series
③ Valve type	10 : Single air control 5/2 way		20 : Double air control 5/2 way		30C : Double air control 5/3 way closed center	
	30E : Double air control 5/3 way exhaust center		30P : Double air control 5/3 way pressure center			
④ Port size	M5: M5	M5: M5	06 : 1/8"	06 : 1/8"	08 : 1/4"	10 : 3/8"
⑤ Thread type	-			T: NPT		

Specification

Model	6A0510	6A0520	6A0530	6A110	6A120	6A130
Port size [Note1]	In=Out=Exh=M5			In=Out=Exh=M5(or=1/8")		
Orifice size(Cv)[Note4]	M5:3.4mm ² (0.2)		6A0530CM5: 2.2mm ² (0.13)	06:8.9mm ² (0.52)		6A130C06: 8.0mm ² (0.47)
Weight	20g	25g	30g	50g	60g	65g
Model	6A210	6A220	6A230	6A310	6A320	6A330
Port size [Note1]	In=Out=1/8"(or=1/4") Exh=1/8"			In=Out=3/8" Exh=1/4"		
Orifice size(Cv)[Note4]	08:15.4mm ² (0.91)		6A230C08: 14.2mm ² (0.84)	10:38.4mm ² (2.26)		6A330C10: 30.5mm ² (1.8)
Weight	120g	125g	135g	250g	290g	320g
Fluid	Air(to be filtered by 40μm filter element)					
Acting	External air control					
Operating pressure	5/3 way					
	29~114psi(0.2~0.8MPa)					
Proof pressure	5/2 way					
	21~114psi(0.15~0.8MPa)					
Temperature	175psi(1.2MPa)					
Material of body	-20~70°C					
Lubrication [Note3]	Aluminum alloy					
Max.frequency [Note2]	Not required					
	5 cycle/sec		3 cycle/sec	5 cycle/sec		3 cycle/sec

[Note1] NPT thread is available.

[Note2] Once lubricated air is used, continue with same medium to optimise valve life span.
Lubricants like ISO VG32 or equivalent are recommended.

[Note3] The maximum actuation frequency is in the no-load state.

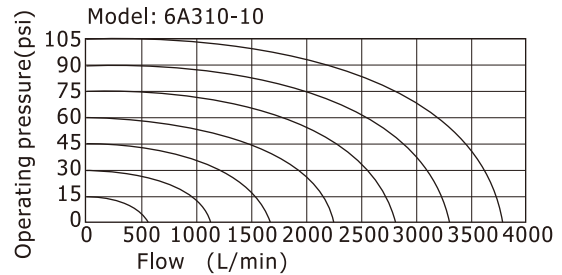
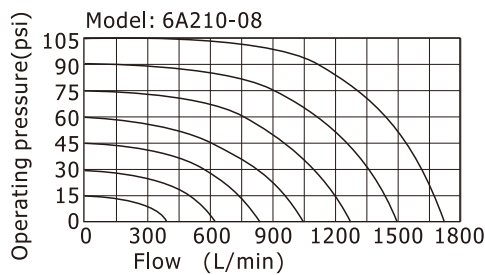
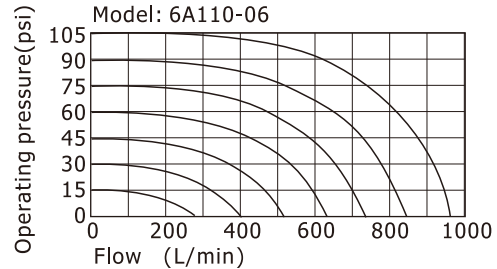
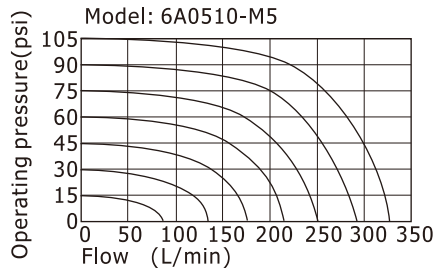
[Note4] Equivalent orifice S and Cv are all calculated from the flow rate data.

6A Series

Product feature

1. Internal hole adopts special processing technology which has little attrition friction, low start pressure and long service life.
2. Can integrate manifold to form valve group to save space.

Flow chart



The data in flow rate chart are obtained from AirTAC lab.

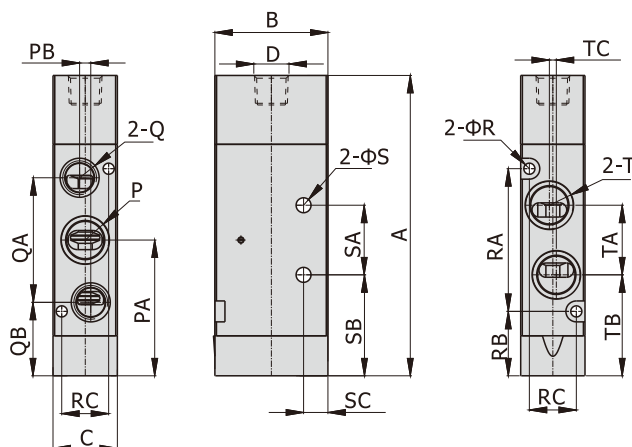
Dimensions

6A0510

6A110

6A210

6A310



Port size

[Unit: inch]

Model\Item	D	P	Q	T
6A0510M5	M5x0.8	M5x0.8	M5x0.8	M5x0.8
6A110M5	M5x0.8	M5x0.8	M5x0.8	M5x0.8
6A11006	M5x0.8	1/8"	1/8"	1/8"
6A21006	1/8"	1/8"	1/8"	1/8"
6A21008	1/8"	1/4"	1/8"	1/4"
6A31010	1/4"	3/8"	1/4"	3/8"

[Unit: mm]

Model\Item	A	B	C	PA	PB	QA	QB	R	RA	RB	RC	S	SA	SB	SC	TA	TB	TC
6A0510M5	50.5	21	10.6	22.5	1	19	13	2.1	22.5	11.5	7.5	Φ2.6	10	17.5	4	10.5	17.5	-
6A110M5	70.5	24	15.5	33	2.6	28	19	2.6	34	16	11	Φ3.2	14	26	4	16.5	24.5	-
6A11006	70.5	24	15.5	33	2.6	28	19	2.6	34	16	11	Φ3.2	14	26	4	16.5	24.5	-
6A21006	86.5	32.5	18.5	39	3.2	36	21	3.2	41	18.5	13.5	Φ4.3	20	29	7	20	29	2
6A21008	86.5	32.5	18.5	39	3.2	36	21	3.2	41	18.5	13.5	Φ4.3	20	29	7	20	29	2
6A31010	116	46	23.5	54	0	50	29	3.2	64	22	18.5	Φ4.3	25	41.5	8	33.5	37	0

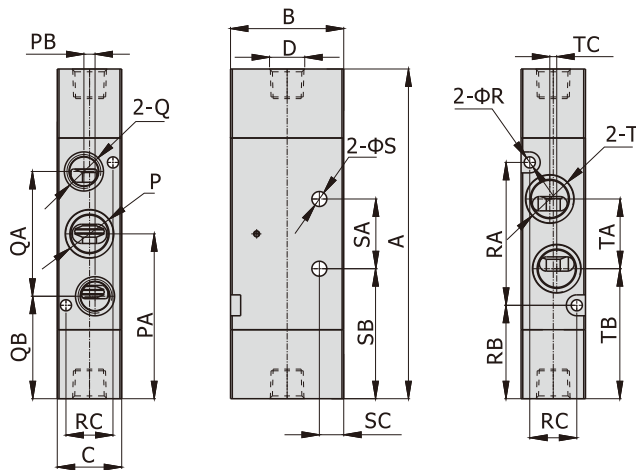
6A Series

6A0520

6A120

6A220

6A320



Port size

[Unit: inch]

Model\Item	D	P	Q	T
6A0520M5	M5x0.8	M5x0.8	M5x0.8	M5x0.8
6A120M5	M5x0.8	M5x0.8	M5x0.8	M5x0.8
6A12006	M5x0.8	1/8"	1/8"	1/8"
6A22006	1/8"	1/8"	1/8"	1/8"
6A22008	1/8"	1/4"	1/8"	1/4"
6A32010	1/4"	3/8"	1/4"	3/8"

[Unit: mm]

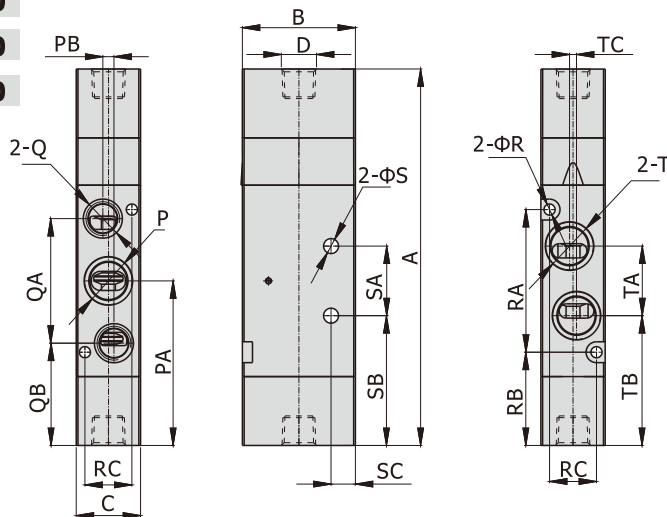
Model\Item	A	B	C	PA	PB	QA	QB	R	RA	RB	RC	S	SA	SB	SC	TA	TB	TC
6A0520M5	55.5	21	10.6	28	1	19	18	2.1	22.5	16.5	7.5	Φ2.6	10	22.5	4	10.5	22.5	-
6A120M5	75	24	15.5	37.5	2.6	28	24	2.6	34	20.5	11	Φ3.2	14	30.5	4	16.5	29.5	-
6A12006	75	24	15.5	37.5	2.6	28	24	2.6	34	20.5	11	Φ3.2	14	30.5	4	16.5	29.5	-
6A22006	94.5	32.5	18.5	47.5	3.2	36	29.5	3.2	41	27	13.5	Φ4.3	20	37.5	7	20	37.5	2
6A22008	94.5	32.5	18.5	47.5	3.2	36	29.5	3.2	41	27	13.5	Φ4.3	20	37.5	7	20	37.5	2
6A32010	124	46	23.5	62	0	50	37	3.2	64	30	18.5	Φ4.3	25	41.5	8	33.5	45.5	0

6A0530

6A130

6A230

6A330



Port size

[Unit: inch]

Model\Item	D	P	Q	T
6A0530M5	M5x0.8	M5x0.8	M5x0.8	M5x0.8
6A130M5	M5x0.8	M5x0.8	M5x0.8	M5x0.8
6A13006	M5x0.8	1/8"	1/8"	1/8"
6A23006	1/8"	1/8"	1/8"	1/8"
6A23008	1/8"	1/4"	1/8"	1/4"
6A33010	1/4"	3/8"	1/4"	3/8"

[Unit: mm]

Model\Item	A	B	C	PA	PB	QA	QB	R	RA	RB	RC	S	SA	SB	SC	TA	TB	TC
6A0530M5	64	21	10.6	28	1	19	18	2.1	22.5	16.5	7.5	Φ2.6	10	22.5	4	10.5	22.5	-
6A130M5	87	24	15.5	37.5	2.6	28	24	2.6	34	20.5	11	Φ3.2	14	30.5	4	16.5	29.5	-
6A13006	87	24	15.5	37.5	2.6	28	24	2.6	34	20.5	11	Φ3.2	14	30.5	4	16.5	29.5	-
6A23006	108	32.5	18.5	47.5	3.2	36	29.5	3.2	41	27	13.5	Φ4.3	20	37.5	7	20	37.5	2
6A23008	108	32.5	18.5	47.5	3.2	36	29.5	3.2	41	27	13.5	Φ4.3	20	37.5	7	20	37.5	2
6A33010	142	46	23.5	62	0	50	37	3.2	64	30	18.5	Φ4.3	25	41.5	8	33.5	45.5	0

