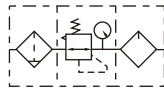


GAC100 Series F.R.L. combination

Specification

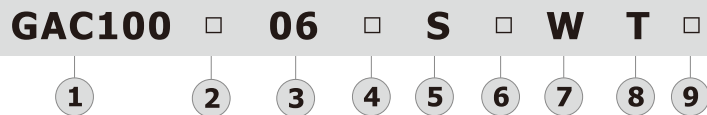
Reflux valve option is not available



Model	GAC100M5	GAC10006	
Fluid	Air		
Port size [Note1]	M5	1/8"	
Filtering grade	40μm or 5μm		
Pressure range	20~130psi(0.15~0.9MPa)		
Max. pressure	145psi(1.0MPa)		
Proof pressure	215psi(1.5MPa)		
Temperature range	-5~70°C(Unfreeze)		
Capacity of drain bowl	6CC		
Capacity of oil bowl	9CC		
Recommended lubricant	ISO VG 32 or equivalent		
Weight	216g		
Constitute	Filter	GAF100M5	GAF10006
	Regulator	GAR100M5	GAR10006
	Lubricator	GAL100M5	GAL10006

[Note1] NPT thread is available.

Ordering code

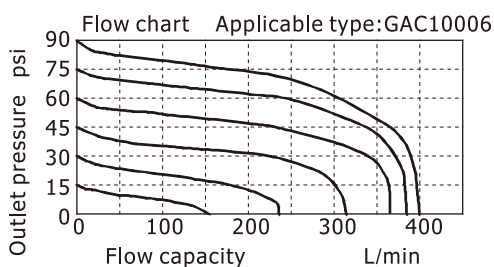
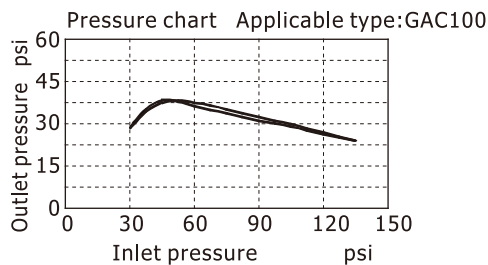


① Model	② Bowl material	③ Port size	④ Drain type	⑤ Type code	⑥ Pressure gauge	⑦ Filtering grade	⑧ Thread type [Note2]	⑨ Code of reflux valve
GAC100: GA100 Series F.R.L unit	Blank : PC	M5: M5 06: 1/8"	Blank: Semi-auto drain+Manual drain	S: Standard L: Lower pressure [Note1]	Blank: Circular N: No gauge	Blank: 40μm W: 5μm	T: NPT(psi/bar)	Blank: Reflux valve is not available

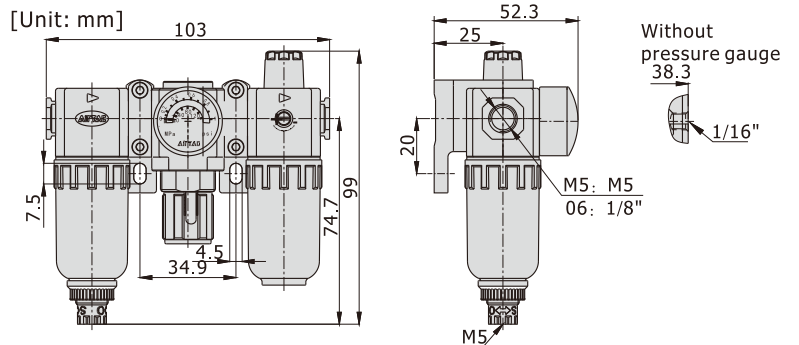
[Note1] The working pressure range of lower pressure type is 0.15~0.4MPa(20~58psi) ;

[Note 2] Thread type means connecting thread and scales of pressure gauge while port size is M5.

Pressure and Flow chart



Dimensions



Inner structure

No.	Item
1	GAF100 series filter
2	Bracket
3	GAR100 series regulator
4	GAL100 series lubricator

