

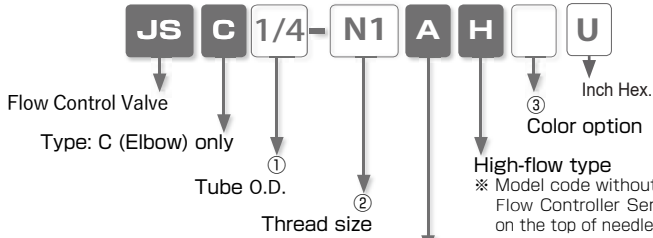


## Flow Control Valve for High Speed Cylinder **High Flow**

- *Speed Control Valve for Actuator*
    - *Meter-out (Exhaust) control only*
      - *Higher Flow Capacity*
    - *Suitable for High Speed Cylinder*
  - *Optional Selection of Body Color (light-gray)*
-

## High Flow

### Model Designation (Example)



Control direction: A (Meter-out) only※  
 ※ ("AG" is marked on the top of needle. Locknut color: Blue)

#### ① Tubing outside dia.

Tube dia.	Inch size		
Code	1/4	3/8	
Size (inch)	1/4"	3/8"	

Tube dia.	mm size			
Code	6	8	10	12
Size (mm)	ø6	ø8	ø10	ø12

#### ② Thread size

Thread size	NPT thread		
Code	N1	N2	N3
Size	1/8NPT	1/4NPT	3/8NPT

Thread size	Taper pipe thread			
Code	01	02	03	04
Size	R1/8	R1/4	R3/8	R1/2

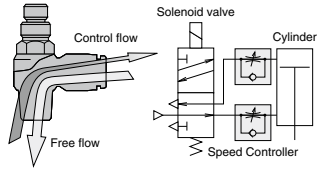
#### ③ Color option

No code : Standard

W : Light-gray

#### ※ Meter-out (Exhaust) control

■ Air from thread side is controlled. Air from tube side is not controlled and flows out from thread side.



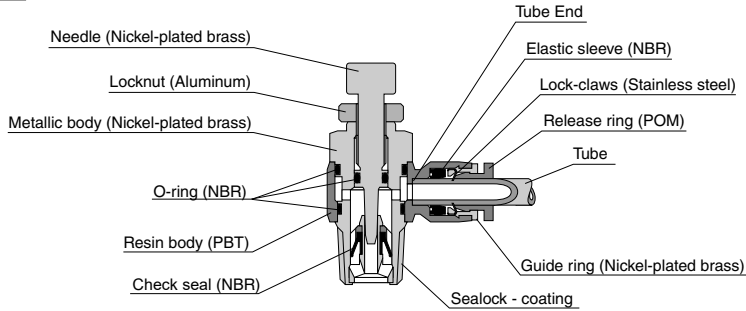
### Specifications

Fluid medium	Air
Operating pressure range	14.5~102psi (0.1~0.7MPa)
Check valve cracking pressure	7.25psi (0.05MPa)
Operating temp. range	32~140°F (0~60°C) (no freezing)

## Construction (Elbow/Banjo : JSC)

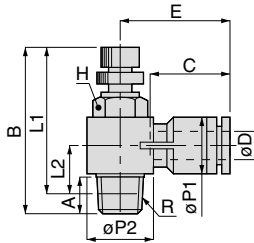


Symbol



## JSC-H Elbow / Banjo

RoHS compliant



Unit : mm

Model code	Tube O.D. $\phi D$	R	A	B		L1		L2	$\phi P1$	$\phi P2$	Tube end C	E	Hex. H	Weight (g)	CAD file name
				max.	min.	max.	min.								
JSC1/4-N1AHU	1/4"	1/8NPT	8.5	42.5	37.5	38.5	33.5	12.5	12.5	15.4	17	24.2	13	24	JSC1/4-N1AHU
JSC1/4-N2AHU		1/4NPT	11.6	50.8	44.8	44.7	38.7	14.1				19.6	26.8	17	43
JSC3/8-N2AHU	3/8"	1/4NPT	11.6	50.8	44.8	44.7	38.7	15.6	18	19.6	20.2	30.5	17	48	JSC3/8-N2AHU
JSC3/8-N3AHU		3/8NPT	12.6	54.3	48.7	47.9	42.3	16.3				24.4	32.5	21	75
JSC6-01AH	6	R1/8	8.5	42.5	37.5	38.5	33.5	12.5	12.5	15.4	17	24.2	13	24	JSC6-01_H
JSC6-02AH		R1/4	11.6	50.8	44.8	44.7	38.7	14.1				19.6	26.8	17	43
JSC8-01AH	8	R1/8	8.5	42.5	37.5	38.5	33.5	12.8	14.5	19.6	18.1	26.2	13	26	JSC8-01_H
JSC8-02AH		R1/4	11.6	50.8	44.8	44.7	38.7	14.1				24.4	28.2	17	45
JSC8-03AH		R3/8	12.6	54.3	48.7	47.9	42.3	16.3		24.4		30.2	21	72	JSC8-03_H
JSC10-02AH	10	R1/4	11.6	50.8	44.8	44.7	38.7	15.6	18	19.6	20.2	30.5	17	48	JSC10-02_H
JSC10-03AH		R3/8	12.6	54.3	48.7	47.9	42.3	16.3				24.4	32.5	21	75
JSC12-03AH	12	R3/8	12.6	54.3	48.7	47.9	42.3	17.8	21	24.4	23.4	35.2	21	78	JSC12-03_H
JSC12-04AH		R1/2	13.6	60.8	54.7	52.6	46.5	17.1				30	38.2	24	118

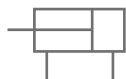
※ 1. "L1" and "L2" are reference values for height dimensions after tightening taper thread.

※ 2. □ in Model code / Replaced with "W" for Light-gray color.

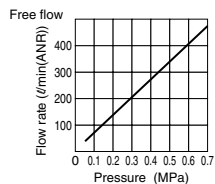
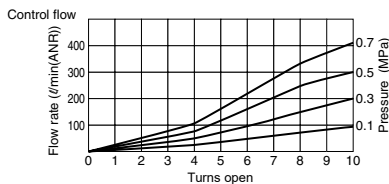
## Flow characteristic

Elbow/Banjo High Flow type

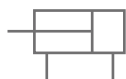
JSC 1/4-N1AHU  
6-01AH  
8-01AH



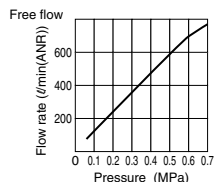
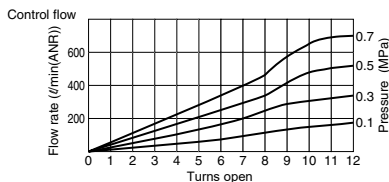
Cylinder tube I.D.  
Max.  $\phi$  **40**mm



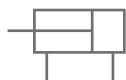
JSC 1/4-N2AHU  
6-02AH



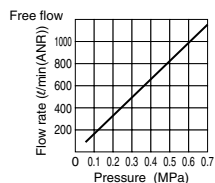
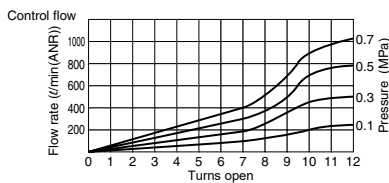
Cylinder tube I.D.  
Max.  $\phi$  **50**mm



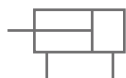
JSC 3/8-N2AHU  
8-02AH  
10-02AH



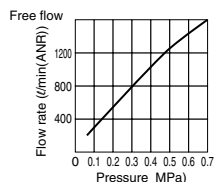
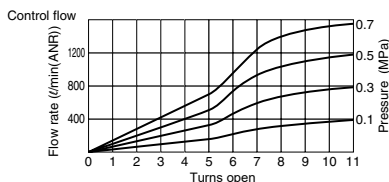
Cylinder tube I.D.  
Max.  $\phi$  **63**mm



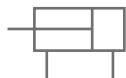
JSC 8-03AH



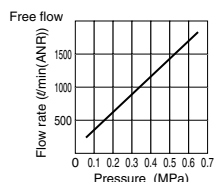
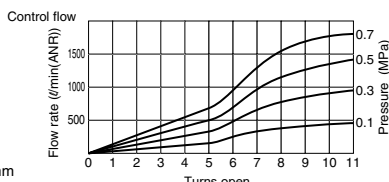
Cylinder tube I.D.  
Max.  $\phi$  **80**mm



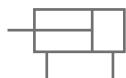
JSC 3/8-N3AHU  
10-03AH  
12-03AH



Cylinder tube I.D.  
Max.  $\phi$  **100**mm



JSC 12-04AH



Cylinder tube I.D.  
Max.  $\phi$  **100**mm

