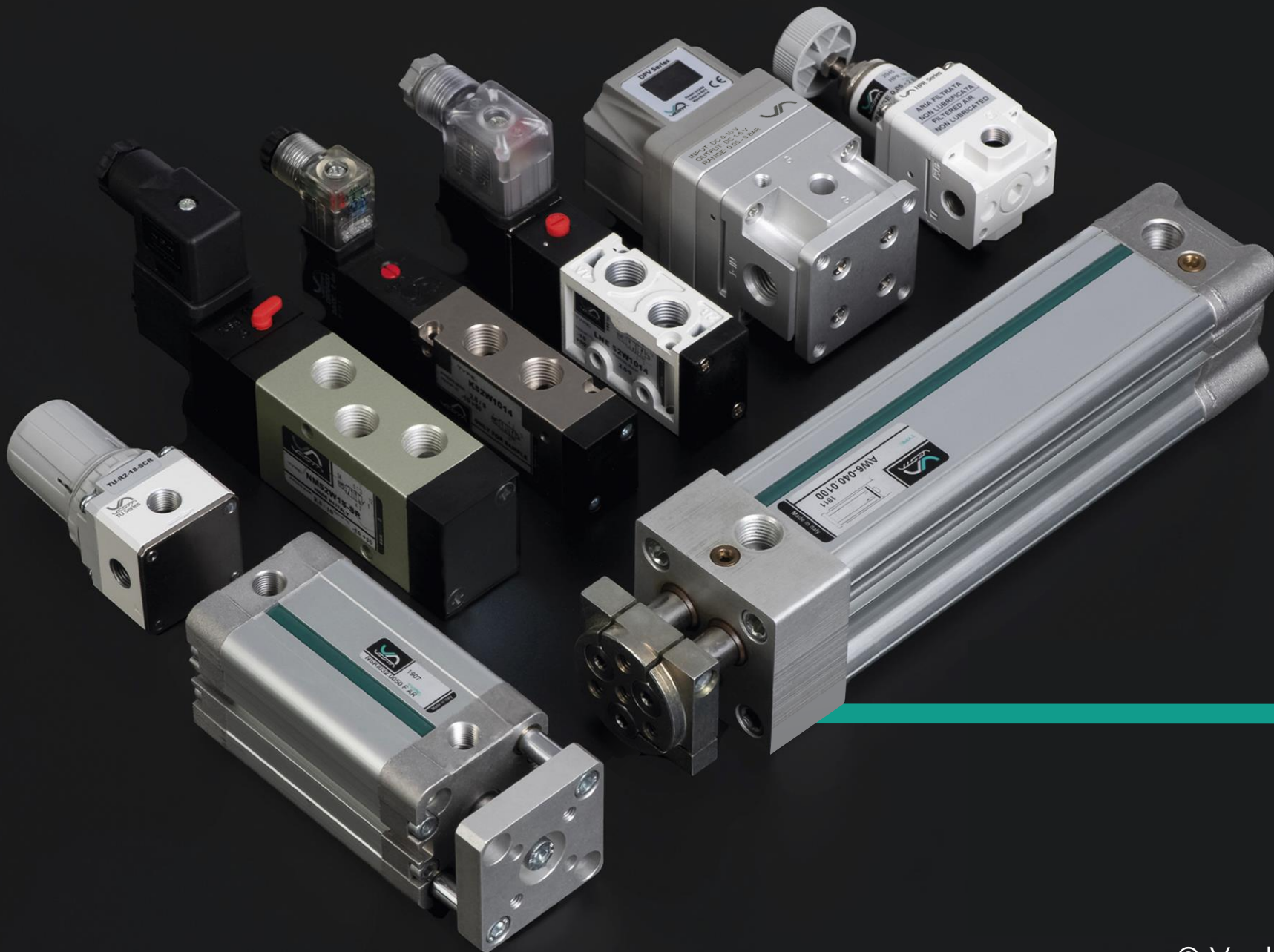


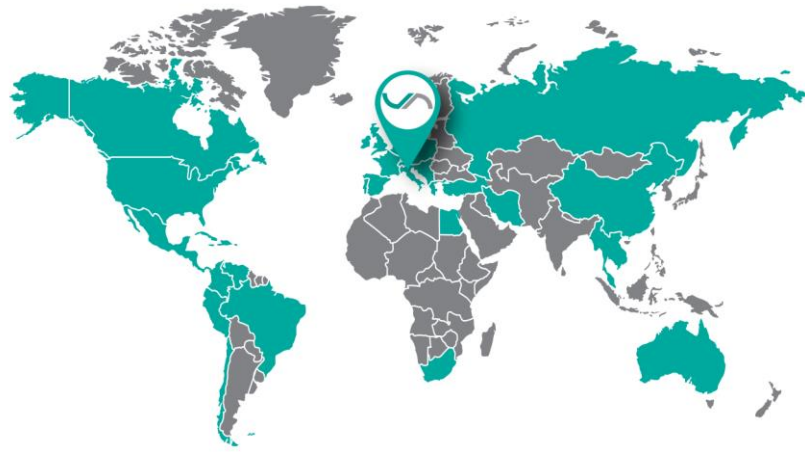
ENG 



Production Range

35 years of international expertise
in the main fields of automation





Since 1984, **pneumatic solutions** for a range of different industries in over **60 markets worldwide**



PACKAGING
& LOGISTICS



FOOD &
BEVERAGE



BIOMEDICAL
& PHARMA



PROCESS
INDUSTRIES



WOOD, GLASS
& ABRASIVES



VACUUM &
MANIPULATION



AUTOMOTIVE
& TRUCKS



RAILWAYS
& RIDES



TEXTILE &
PRINTING



WELDING &
SIDERURGICAL

**ALWAYS
COMMITTED
TO QUALITY**

UNI EN ISO 9001
compliant since 1996
100% of products tested



SGS

CLICK TO DOWNLOAD ISO CERTIFICATION

MADE IN ITALY





THE RANGE

CYLINDERS

Pneumatic actuators & grippers

page 6

CLICK ON
PRODUCTS



VALVES

Pneumatic valves & solenoid valves

page 19



AIR TREATMENT

FRL units & precision regulators

page 31



FITTINGS

Fittings, flow regulators, silencers & vacuum

page 38





CYLINDERS

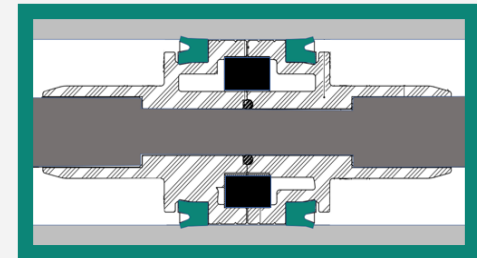
Over 40 million cylinders produced since 1984

PTFE-graphite-bronze
long bushing guide



Lapped/rolled
stainless steel rods

Polyurethane
(PUR) lip seals
for all series



CYLINDERS

RANGE MAP

LINKS:

 [3D STEP FILES](#) 

 [VESTA ATEX](#) 

ISO STANDARD PNEUMATIC CYLINDERS

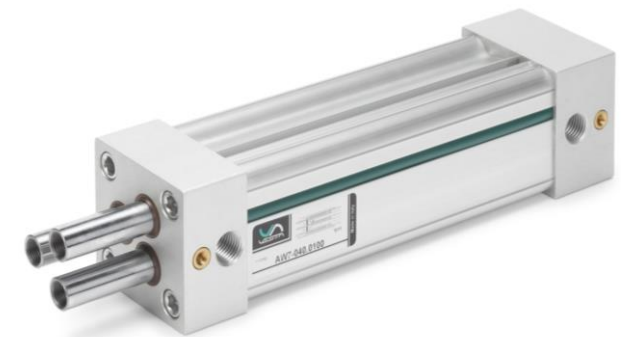
[page 8](#)

CLICK ON
PRODUCTS



GUIDED & NON-ROTATION PNEUMATIC ACTUATORS

[page 13](#)



ACTUATORS WITH SPECIAL FUNCTIONS

[page 15](#)



CYLINDERS FOR AGGRESSIVE AND EXPLOSIVE ENVIRONMENTS

[page 16](#)



PNEUMATIC GRIPPERS

[page 18](#)





BACK TO THE RANGE

Seals replacement kit available (also FKM)



Available with non-rotation hexagonal rod



ISO 6432 ROUND CYLINDERS

DVM/ACM/DRM

ø12, 16, 20, 25

ISO 6432 screwed-head (openable) magnetic cylinders

STEP FILES 3D



ATEX II 3GD



DLM/ALM

ø08, 10, 12, 16, 20, 25

ISO 6432 crimped-head magnetic cylinders

DVMT/ACMT

ø32, 40, 50

Round magnetic cylinders

MAGNETIC SWITCHES



ISO 6432 FIXINGS



CLICK ON PRODUCTS ↑



BACK TO THE RANGE

ISO CYLINDERS 15552



Assembly kits available



NWT

ø32, 40, 50, 63, 80, 100, 125

ISO 15552 cylinders for heavy applications

STEP FILES 3D



ATEX II 3GD



Polyurethane lip seals
stainless steel rods



Assembly kits available



LNT

ø32, 40, 50, 63, 80, 100, 125

ISO 15552 standard magnetic cylinders

MAGNETIC SWITCHES



ISO15552 FIXINGS



CLICK ON PRODUCTS ↑



BACK TO THE RANGE

BIG-SIZE ISO 15552 CYLINDERS

FKM seals available for all sizes



XJN

ø160, 200, 250, 320

ISO 15552 cushioned magnetic cylinders

CLICK ON PRODUCTS ↑

MAGNETIC SWITCHES



ISO15552 FIXINGS





BACK TO THE RANGE

ISO 21287 / UNITOP & COMPACT CYLINDERS



Multi-standard (ISO/UNI) assembly kits available



Polyurethane double lip seals



NSK I/U

ø16, 20, 25, 32, 40, 50, 63, 80, 100

ISO 21287 & UNITOP compact cylinders

STEP FILES 3D



ATEX II 3GD



SH

ø125, 160, 200

Big size compact magnetic cylinders

CZ

ø6, 10, 16

Cartridge micro cylinders

MAGNETIC SWITCHES








ISO 21287 FIXINGS



CLICK ON PRODUCTS ↑



ISO CYLINDERS STANDARD CONVERSION CHART

		FESTO	SMC	PARKER	NORGREN	ASCO/NUMATICS
 ISO 6432	DVM/DLM ACM/ALM	DSNU (double act.) ESNU (single act.)	C85	P1A	RM8000	Series 435
 ISO 1552	NWT LNT XJN	DSBG DSBC DSBF	CP95 CP96	P1D (discontinued) P1F	PRA802000	Series 450 Series 453
 ISO 21287 & UNITOP	NSK-I NSK-U 	ADN (double act.) AEN (single act.) ADVU (UNITOP double) AEVU (UNITOP single)	C55	P1P	RA192000	Series 499



BACK TO
THE RANGE

GUIDED & NON-ROTATION ACTUATORS



Available in
stainless steel

GLH*

ø20, 25, 32, 40, 50, 63, 80, 100

ISO 15552/6432 compliant linear control units H

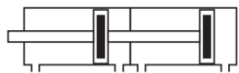
*stainless steel version GLHX: page 17



HNG

ø16, 20, 25, 32, 40, 50, 63

Compact guide non-rotation cylinders



2/3/4-tandem
version available



NCV63

ø63

Flat non-rotation pneumatic cylinders

CLICK ON
PRODUCTS ↑





BACK TO
THE RANGE

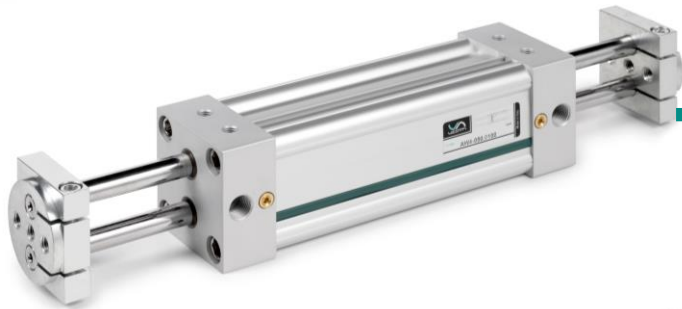
TWIN-ROD / HOLED-ROD CYLINDERS



PS/HPSK

ø16, 20, 25, 32

Pneumatic dual holed-rod slides



AW2-3

32, 40, 50, 63, 80, 100

Cylinders with non-rotation twin rods

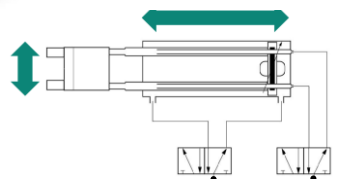
Non-rotation cylinders
within ISO dimensions



AW1-5-7

ø32, 40, 50, 63

Cylinders with holed telescopic rods



Through-rod
fluid control

CLICK ON
PRODUCTS ↑

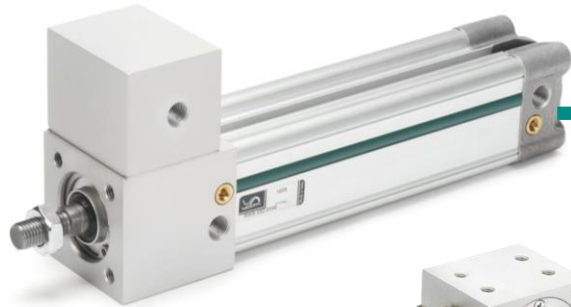




BACK TO
THE RANGE

ACTUATORS WITH SPECIAL FUNCTIONS

Extra-strong locking
3x cylinder force



RW/DC

ø32, 40, 50, 63, 80, 100

Cylinders with pneumatic rod braking device

CRW

ø25, 32, 40, 50, 63, 80, 100

Rotary actuators (male/female, 90°/180°/360°)

Precision angle
Regulation option



RLF/TM

ø16, 20, 25, 32, 40, 50, 63

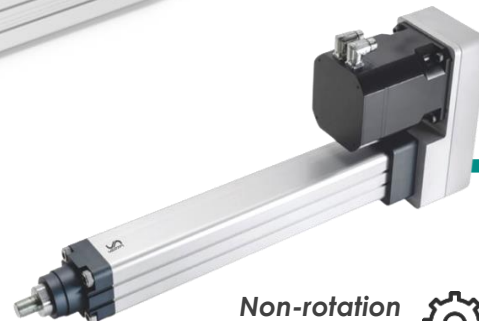
Rodless cylinders (band and magnetic)



ESNL

ø32, 40, 50, 63, 80 (100, 125)

ISO 15552 electrical actuators (parallel/linear)



Non-rotation
special piston



CLICK ON
PRODUCTS ↑





BACK TO THE RANGE

CYLINDERS FOR FOOD & HARSH ENVIRONMENT



Available with non-rotation hexagonal rod



DLMX/ALMX

ø10, 12, 16, 20, 25

ISO 6432 cylinders (with adj. cushion) in AISI304/316



Inspectionable heads

RSSC

ø32, 40, 50, 63

Stainless steel cylinders for the food industry



NSKX

ø16, 20, 25, 32, 40, 50, 63, 80, 100

ISO 21287 compact stainless steel cylinders

MAGNETIC SWITCHES



ATEX II 3GD





BACK TO THE RANGE

CYLINDERS FOR FOOD & HARSH ENVIRONMENT

Heads in certified FDA/food polymer



XJS

ø32, 40, 50, 63, 80, 100

ISO 15552 cylinders in FDA compliant polymer & AISI304

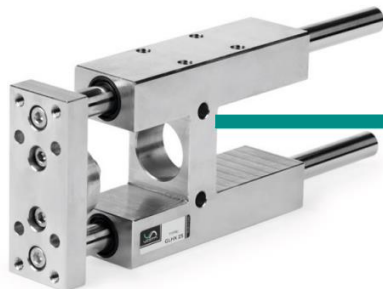
Food grade rod-seals Available on request



XJSS

ø32, 40, 50, 63, 80, 100, 125

ISO 15552 cylinders in AISI304/316



GLHX

ø25, 32, 40, 50, 63, 80, 100

ISO 15552/6432 linear H guides in AISI304/316

CLICK ON PRODUCTS ↑

MAGNETIC SWITCHES



ATEX II 3GD





BACK TO
THE RANGE

PNEUMATIC GRIPPERS



NGA

ø10, 12, 16, 20, 25, 32

Angular 30° grippers (single/double acting)



Ball-bearing
guiding system

NGP

ø10, 16, 20, 25

Parallel grippers (single/double acting)



NGT

ø12, 16, 20, 25

180° grippers

CLICK ON
PRODUCTS ↑

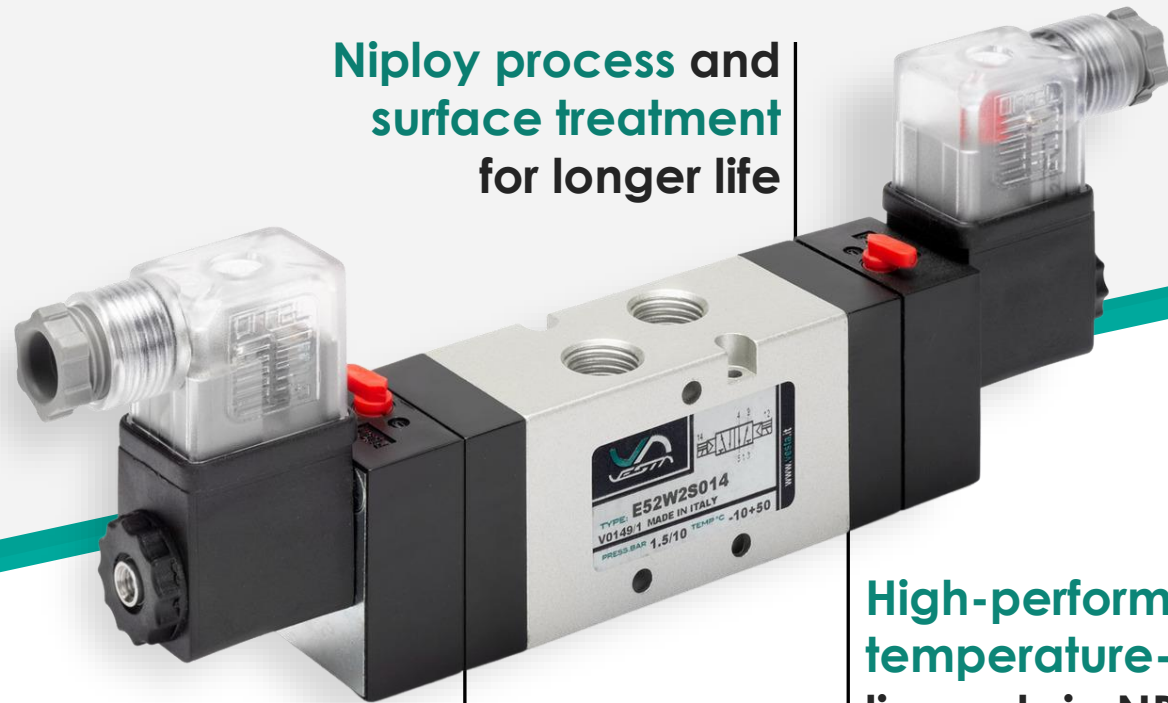
MAGNETIC SWITCHES





VALVES

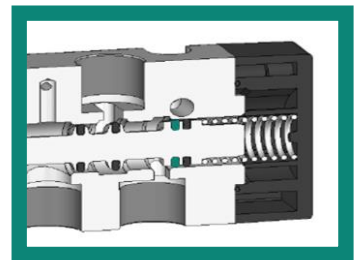
34.5 million valves produced since 1989



Niploy process and surface treatment for longer life







Optimized spaces for high-flow

High-performance temperature-resistant lip seals in NBR or FKM



VALVES

VESTA RANGE MAP

-  3D STEP FILES 
-  VESTA ATEX 
-  EWJ TRAILER 

CLICK ON PRODUCTS



VALVES FOR EXTREME ENVIRONMENT & ATEX

page 21

NAMUR & ISO VALVES & SOLENOID VALVES

page 22

3/2, 5/2, 5/3 VALVES & SOLENOID VALVES

page 23



EWJ PLUG-IN VALVE ISLAND

page 24

DIRECT ACTING 3/2 OPERATORS

page 25

HIGH-FLOW 3/2 POPPET VALVES

page 26

MECHANICAL & MANUAL VALVES

page 27





BACK TO THE RANGE

VALVES FOR EXTREME ENVIRONMENT & ATEX

Ex ATEX II 3GD compliant

 Seals for high & low temperature available

SINCE 1989



E SERIES

22mm coil
G1/8", 1/4", 1/2"

Temperature & dust resistant lip-seals
3/2, 5/2 and 5/3 valves & solenoid valves

Ex ATEX II 2GD compliant



 Internal stainless steel parts and Alodine treatment

XE SERIES

22mm ATEX coil
G1/4", 1/2", NAMUR

ATEX II 2GD valves, solenoid valves & Namur

CLICK ON PRODUCTS 





BACK TO THE RANGE

NAMUR VALVES & ISO VALVES

Ex ATEX II 3GD compliant

Seals for high & low temperature available



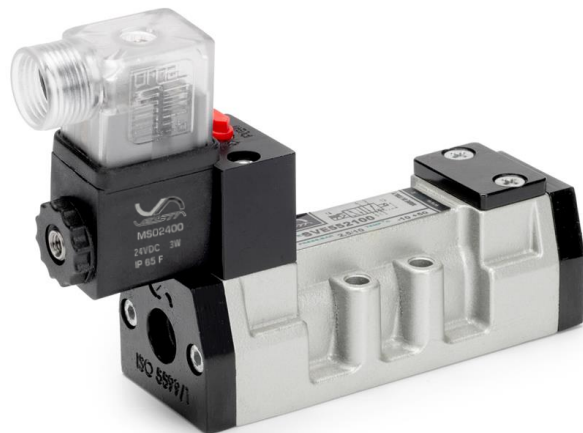
5/2 available with actuation feedback



NM SERIES

22mm coil
NAMUR (IN: G1/4")

Temperature & dust resistant lip-seals
Namur valves & solenoid valves



ISO manifolds available

SVE/SVP SERIES

22mm coil
ISO 1, ISO 2

ISO1 & ISO2 valves and solenoid valves

CLICK ON PRODUCTS



BACK TO THE RANGE

VALVES & SOLENOID VALVES (3/2, 5/2, 5/3)

Quick switching times up to 35Hz



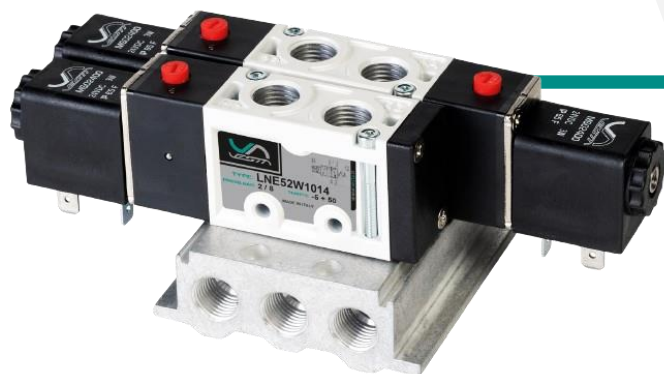
Flow rate G1/4" 1,400 NL/min



K SERIES

17mm coil
G1/8", 1/4", 1/2"

High-flow & quick-exchange mini valves



LNE SERIES

22mm coil
G1/8", 1/4", 3/8", 1/2", NAMUR

Light die-cast body lip-seals valves

CLICK ON PRODUCTS ↑





BACK TO THE RANGE

MULTIPOLE CONNECTION MANIFOLDS



Innovative system for coils configuration



Assembly kits available on request

EWJ VALVE ISLAND

Operator 10mm
IN: G1/4" OUT: tube Ø6

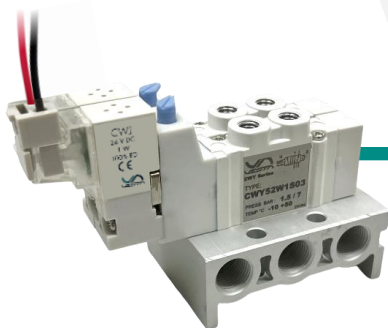
Self-configuration modular plug-in valve terminal



MPV (on request)

17mm coil
G1/8", 1/4"

Integrated electrical connection manifold



CWY-3

Operator 10mm
OUT: M5

Mini M5 port valves manifold

CLICK ON PRODUCTS ↑





BACK TO THE RANGE

DIRECT ACTING 3/2 OPERATORS



Modular bodies for quick assembly



QBE

22mm coil - G1/8"

3/2 direct acting solenoid valves

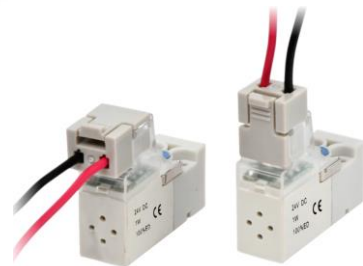


CWJ-15

15mm

3/2 micro operators 15mm (manifold available)

Fast switching times up to 30Hz



CWJ-10

10mm

3/2 micro operators 10mm (manifold available)



With universal (H/V) cable connector

CLICK ON PRODUCTS ↑





BACK TO
THE RANGE

HIGH-FLOW 3/2 POPPET VALVES



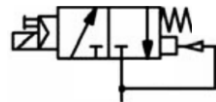
Flow rate 6.000
to 60.000 NL/min



PV32

3/2 high-flow poppet valves for air & vacuum

30mm coil
G1/2", 3/4", 1", 1 1/2", 2"



Vacuum with
servo-vacuum
available

CLICK ON
PRODUCTS ↑





BACK TO
THE RANGE

MANUAL VALVES



High flow version (G1/2")
available on request

VCML

G1/8", 1/4"

Manual lever valves (AISI 304 lever option)

G1/8" available with
pneumatic return



VCMT

G1/8", 1/4"

Manual button valves



VFP

G1/4"

Foot pedal valves

CLICK ON
PRODUCTS ↑



BACK TO THE RANGE

MECHANICAL VALVES



VCMS

G1/8", 1/4"

Cam actuated mechanical valves



VCLL

G1/8"

Lateral roller-lever mechanical valves



VCLR

G1/8"

Roller-lever valves (AISI 304 operator option)

Food grade (AISI 304)
operator available

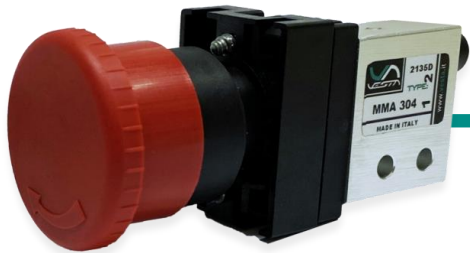


CLICK ON PRODUCTS



BACK TO
THE RANGE

MANUAL & MECHANICAL MICRO VALVES



MPGI/MPF/MSR

Push-in Tube Ø4, M5

Manual button/switch micro valves



MMA

Push-in Tube Ø4, M5

Cam actuated mechanical micro valves

Available NC/NO,
5/2 and M5 ports



MMR/MMS

Push-in Tube Ø4, M5

Roller lever mechanical micro valves

CLICK ON
PRODUCTS ↑



BACK TO THE RANGE

PNEUMATIC LOGIC ELEMENTS

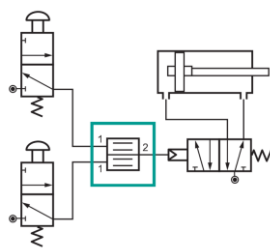


AND/OR/YES/NOT

Push-in Tube Ø4

Logic elements for pneumatic control

Two-hand safety valve



SBI

Push-in Tube Ø4

Two-hand safety valves

CLICK ON PRODUCTS ↑



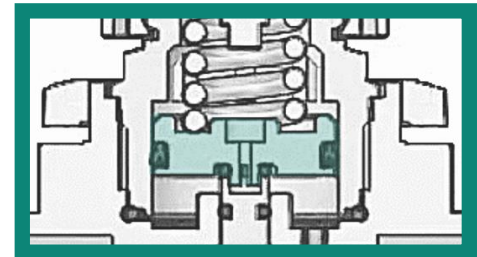
AIR TREATMENT UNITS

All series with
aluminium body
for **high-resistance**



From 1/8" precision regulation
up to 2" high-flow elements

Acetal polymer pistons
with NBR lip seals for
stable regulation



AIR TREATMENT

RANGE MAP

-  3D STEP FILES 3D 
-  TU - FRL RANGE 
-  TU SERIES INTRO 

PRESSURE REGULATORS

page 33

CLICK ON PRODUCTS



MODULAR LINES (FRL)

page 34



HIGH-FLOW, HIGH-PRESSURE & BOOSTERS

page 36



HIGH-PRECISION REGULATORS

page 37



PROPORTIONAL VALVES

page 37





BACK TO THE RANGE

PRESSURE REGULATORS

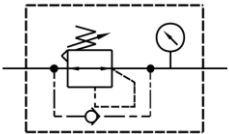


TU-R2

M5, G1/8", 1/4"

Pressure microregulators (with backflow option)

Regulators available
With backflow option



TU-R SIZE 3/4/5

G1/4', 3/8", 1/2", 3/4", 1"

Pressure regulators (with backflow option)



INOX-OX (on request)

G1/4"

Oxygen microregulators (NSF materials)

CLICK ON PRODUCTS ↑



BACK TO THE RANGE

FRL UNITS – MODULAR LINES



TU-FRL SIZE 2

G1/4'

R = Regulator, **FR** = Filter-regulator, **FRL** = FRL Unit
F = Filter, **L** = Lubricator, **VM** = 3/2 on-off valve
VS = Slow start + shut-off valve



TU-FRL SIZE 3

G1/4", 3/8", 1/2"

R = Regulator, **FR** = Filter-regulator, **FRL** = FRL Unit
F = Filter, **L** = Lubricator, **VM** = 3/2 on-off valve
VS = Slow start + shut-off valve, **MMF** = Micro-mist filter



Filtering from 40 to 0,01 µm

CLICK ON PRODUCTS ↑



BACK TO THE RANGE

FRL UNITS – MODULAR LINES



TU-FRL SIZE 4

G1/2"

R = Regulator, **FR** = Filter-regulator, **FRL** = FRL Unit
F = Filter, L = Lubricator, **VM** = 3/2 on-off valve
VS = Slow start + shut-off valve



Metal bowl Available for all sizes



TU-FRL SIZE 5

G3/4", 1"

R = Regulator, **FR** = Filter-regulator, **FRL** = FRL Unit
F = Filter, L = Lubricator, **VM** = 3/2 on-off valve

CLICK ON PRODUCTS ↑



BACK TO
THE RANGE

HIGH-FLOW, HIGH-PRESSURE & BOOSTERS



0-15 bar regulation,
20 bar resistance

TU-F, R, L SIZE 4H

G1/2"

High-pressure regulators & FRL elements (0-15 bar)



Flow rate up to
50,000 NL/min



TU-F, R, L SIZE 6/7

G1 1/2", 2"

High-flow filters & regulators



PBR

ø40, 63, 100

Pressure boosters (1:2, 1:3, 1:4)

CLICK ON
PRODUCTS ↑



BACK TO THE RANGE

HIGH-PRECISION PRESSURE REGULATORS



0.2% F.S. precision

HPR SERIES

G1/8", 1/4", 1/2"

High-precision manual pressure regulators



Flow rate G1/2" 5,000 NL/min



DPV SERIES

OPERATION MANUAL

G1/8", 1/4", 1/2"

Proportional valves with electric control



DPS SERIES

OPERATION MANUAL

G1/8"

Digital pressure switches (positive and vacuum)

Output 1-5V, 4-20mA & PNP



CLICK ON PRODUCTS

FITTINGS

 RANGE MAP

LINKS:



FITTINGS CATALOG



QUICK PUSH-IN
FITTINGS & MINI FITTINGS

page 39



BRASS
FITTINGS

page 39



STAINLESS
STEEL FITTINGS

page 39



CONTROL
VALVES

page 39



FLOW
REGULATORS

page 40



SILENCERS

page 40



FITTINGS WITH
VACUUM GENERATOR

page 40





BACK TO
THE RANGE

FITTINGS & MINI FITTINGS



QF

G1/8", 1/4", 3/8", 1/2"

Quick push-in fittings



QM

M3, M5, M6

Quick push-in mini fittings



QB

G1/8", 1/4", 3/8", 1/2"

Brass push-in fittings



QX

G1/8", 1/4", 3/8", 1/2"

Stainless steel push-in fittings



QV

G1/8", 1/4", 3/8", 1/2"

Control valves

CLICK ON
PRODUCTS ↑

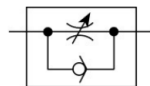


BACK TO
THE RANGE

FLOW REGULATORS, SILENCERS, VACUUM



Precision control
high flow capacity



VRF

G1/8", 1/4", 3/8", 1/2"

Precision speed controllers



QR

G1/8", 1/4", 3/8", 1/2"

Push-in speed controllers



QS

G1/8", 1/4", 3/8", 1/2"

Silencers & exhaust control silencers



VQ

G1/8"

Fittings with vacuum generators

Vacuum pressure
up to -0.90 bar



CLICK ON
PRODUCTS ↑



Custom pneumatic cylinders and valves for **hard environments**, with **special functions** or for different fluids.



Ask us for more: info@vesta.it



PACKAGING & LOGISTICS



FOOD & BEVERAGE



BIOMEDICAL & PHARMA



PROCESS INDUSTRIES



WOOD, GLASS & ABRASIVES



VACUUM & MANIPULATION



AUTOMOTIVE & TRUCKS



RAILWAYS & RIDES



TEXTILE & PRINTING



WELDING & SIDERURGICAL



Didactic panel
pneumatic or electronic



Online training 



Vesta Automation S.r.l.

Via Martiri di Belfiore 69/A

45100 Rovigo – Italy



+39 0425 474838

info@vesta.it

www.vesta.it

+39 347 634 7881

Vesta Automation Srl



P.IVA/VAT: 03640490284
© Vesta Automation, 2024

